

# Amphiphysin antibody



Catalog Number: 108004

## Product name

Amphiphysin antibody

IP: 1:500-1:5000

IHC: 1:20-1:200

## Specificity

Human, Mouse, Rat; other species not tested.

## Antibody description

Amphiphysin Rabbit Polyclonal antibody. Positive IHC detected in human pancreas cancer tissue. Positive IP detected in mouse brain tissue. Positive WB detected in mouse brain tissue, mouse lung tissue. Observed molecular weight by Western-blot: 115-125 kDa

## Preparation

This antibody was obtained by immunization of Amphiphysin recombinant protein (Accession Number: NM\_001635). Purification method: Antigen affinity purified.

## Formulation

PBS with 0.02% sodium azide and 50% glycerol pH 7.3.

## Storage

Store at -20°C. DO NOT ALIQUOT

## Clonality

Polyclonal

## Ig Type

Rabbit IgG

## Applications

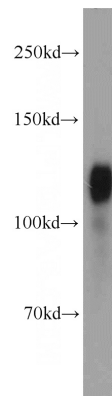
ELISA, WB, IHC, IP

## Dilutions

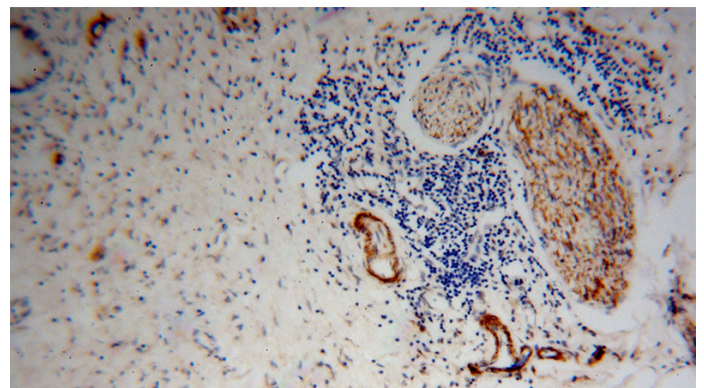
Recommended Dilution:

WB: 1:500-1:5000

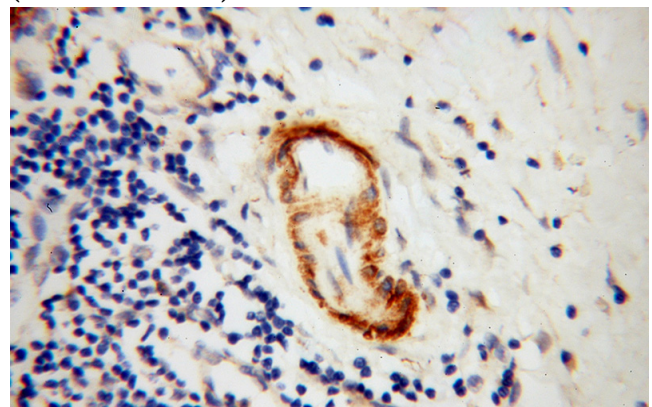
## Validations



mouse brain tissue were subjected to SDS PAGE followed by western blot with Catalog No:108004(AMPH antibody) at dilution of 1:1500



Immunohistochemical of paraffin-embedded human pancreas cancer using Catalog No:108004(AMPH antibody) at dilution of 1:100 (under 10x lens)



Immunohistochemical of paraffin-embedded

# Amphiphysin antibody

Catalog Number: 108004

---

human pancreas cancer using Catalog No:108004(AMPH antibody) at dilution of 1:100 (under 40x lens)

IP Result of anti-AMPH (IP:Catalog No:108004, 4ug; Detection:Catalog No:108004 1:1500) with mouse brain tissue lysate 4000ug.

