

RPS14 Polyclonal Antibody



Catalog Number: 165004

Product name

RPS14 Polyclonal Antibody

Specificity

Human, Mouse, Rat

Antibody description

Polyclonal antibody to RPS14

Preparation

Antigen: Recombinant fusion protein containing a sequence corresponding to amino acids 1-151 of human RPS14 (NP_005608.1).

Formulation

PBS with 0.02% sodium azide, 50% glycerol, pH7.3.

Storage

Store at -20°C. Avoid freeze / thaw cycles.

Clonality

Polyclonal

Ig Type

Rabbit IgG

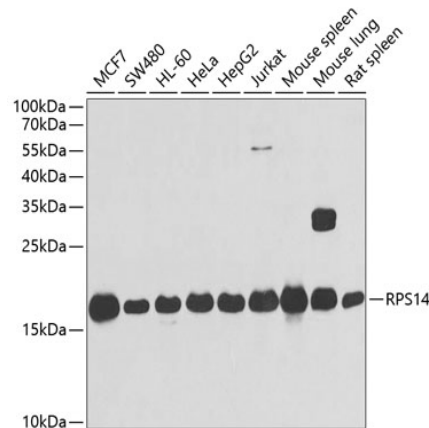
Applications

WB, IHC, IF

Dilutions

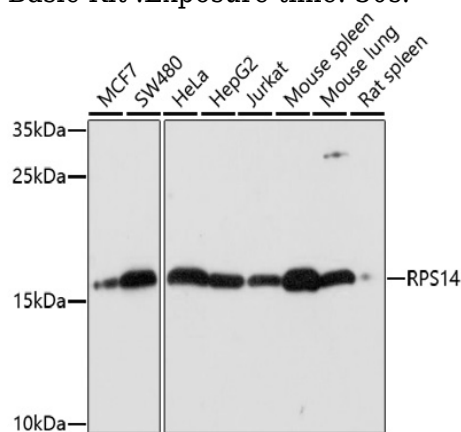
WB 1:500 - 1:2000
IHC 1:50 - 1:200
IF 1:50 - 1:200

Validations



Western blot - RPS14 Polyclonal Antibody

Western blot analysis of extracts of various cell lines, using RPS14 antibody at 1:1000 dilution. Secondary antibody: HRP Goat Anti-Rabbit IgG (H+L) at 1:10000 dilution. Lysates/proteins: 25ug per lane. Blocking buffer: 3% nonfat dry milk in TBST. Detection: ECL Basic Kit. Exposure time: 30s.

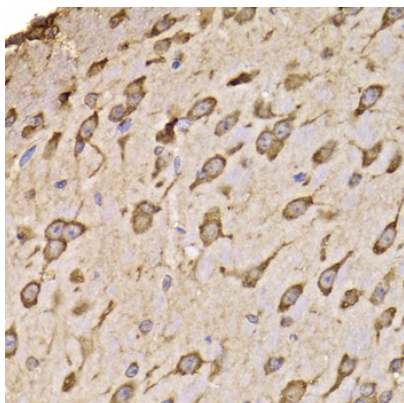


Western blot - RPS14 Polyclonal Antibody

Western blot analysis of extracts of various cells, using RPS14 antibody at 1:1000 dilution ratio through one-step method. Secondary antibody: HRP Goat Anti-Rabbit IgG (H+L) at 1:10000 dilution. Lysates/proteins: 25ug per lane. Blocking buffer: 3% nonfat dry milk in TBST. Detection: ECL Basic Kit. Exposure time: 5s.

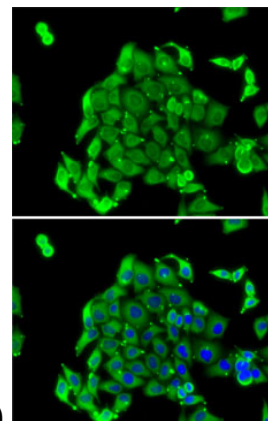
RPS14 Polyclonal Antibody

Catalog Number: 165004



Immunohistochemistry - RPS14 Polyclonal Antibody

Immunohistochemistry of paraffin-embedded mouse brain using RPS14 antibody at dilution of



1:100 (40x lens).

Immunofluorescence - RPS14 Polyclonal Antibody

Immunofluorescence analysis of MCF7 cells using RPS14 antibody . Blue: DAPI for nuclear staining.