

Anti-STAT6 Rabbit antibody



Catalog Number: 168793

Product name

Anti-STAT6 Rabbit antibody

Specificity

Human, Mouse, Rat

Antibody description

STAT6 Rabbit monoclonal antibody

Preparation

Antigen: A synthetic peptide of human STAT6

Formulation

50nM Tris-Glycine(pH 7.4), 0.15M NaCl, 40%Glycerol, 0.01% sodium azide and 0.05% BSA.

Storage

Store at 4°C short term. Store at -20°C long term. Avoid freeze / thaw cycle.

Clonality

Monoclonal

Ig Type

Rabbit IgG

Applications

WB, IHC-P, ICC/IF

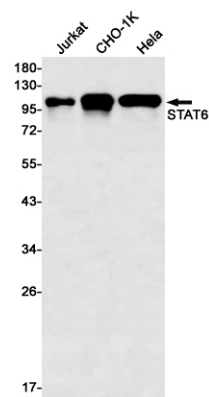
Dilutions

WB: 1/1000

IHC: 1/20

ICC/IF: 1/50

Validations



Western blot detection of STAT6 in Jurkat,CHO-K1,Hela cell lysates using STAT6 Rabbit mAb(1:500 diluted).Predicted band size:94kDa.Observed band size:110kDa.