

# Anti-RBP4 antibody



Catalog Number: 105793

## Product name

Anti-RBP4 antibody

## Immunogen

[Canine RBP4 \(His Tag\) recombinant protein](#)

## Specificity

Canine RBP4

## Antibody description

Rabbit polyclonal to RBP4

## Preparation

Produced in rabbits immunized with purified, recombinant Canine RBP4 (rh RBP4; F1PQI4; Met1-Leu201). RBP4 specific IgG was purified by Canine RBP4 affinity chromatography.

## Formulation

0.2 µm filtered solution in PBS

## Storage

This antibody can be stored at 2°C-8°C for one month without detectable loss of activity. Antibody products are stable for twelve months from date of receipt when stored at -20°C to -80°C.

Preservative-Free.

Sodium azide is recommended to avoid contamination (final concentration 0.05%-0.1%). It is toxic to cells and should be disposed of properly. Avoid repeated freeze-thaw cycles.

## Clonality

Polyclonal

## Ig Type

Rabbit IgG

## Applications

ELISA, WB

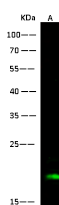
## Dilutions

WB: 10-20 µg/ml

ELISA: 0.1-0.2 µg/mL

This antibody can be used at 0.1-0.2 µg/mL with the appropriate secondary reagents to detect Canine RBP4. The detection limit for Canine RBP4 is < 0.039 ng/well.

## Validations



Lanes	A
Items	
Sample (whole cell lysate)	HepG2
Sample volume (µg/lane)	30
Gel	13%SDS-PAGE reducing gel
Recommended Concentration	10-20 µg/ml
Secondary Antibody	DyLight 800-labeled Antibody to Rabbit IgG (H+L), at 1:5000 dilution.
Developed using	Odyssey imaging system
Explanation	Predicted band size : 23 kDa Observed band size : 18 kDa

RBP4 Antibody, Rabbit PAb, Antigen Affinity Purified, Western blot