

PSMD10 antibody



Catalog Number: 114393

Product name

PSMD10 antibody

Specificity

Human, Mouse, Rat; other species not tested.

Antibody description

PSMD10 Rabbit Polyclonal antibody. Positive WB detected in human brain tissue, human placenta tissue. Observed molecular weight by Western-blot: 24 kDa

Preparation

This antibody was obtained by immunization of PSMD10 recombinant protein (Accession Number: NM_002814). Purification method: Antigen affinity purified.

Formulation

PBS with 0.1% sodium azide and 50% glycerol pH 7.3.

Storage

Store at -20°C. DO NOT ALIQUOT

Clonality

Polyclonal

Ig Type

Rabbit IgG

Applications

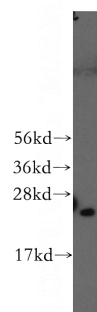
ELISA, WB

Dilutions

Recommended Dilution:

WB: 1:200-1:2000

Validations



human brain tissue were subjected to SDS PAGE followed by western blot with Catalog No:114393(PSMD10 antibody) at dilution of 1:500