

# CYP2D6 antibody

Catalog Number: 109693

## Product name

CYP2D6 antibody

## Specificity

Human, Mouse, Rat; other species not tested.

## Antibody description

CYP2D6 Rabbit Polyclonal antibody. Positive IHC detected in human kidney tissue, human liver tissue. Positive WB detected in mouse liver tissue. Observed molecular weight by Western-blot: 50 kDa, 65 kDa

## Preparation

This antibody was obtained by immunization of CYP2D6 recombinant protein (Accession Number: NM\_000106). Purification method: Antigen affinity purified.

## Formulation

PBS with 0.1% sodium azide and 50% glycerol pH 7.3.

## Storage

Store at -20°C. DO NOT ALIQUOT

## Clonality

Polyclonal

## Ig Type

Rabbit IgG

## Applications

ELISA, IHC, WB

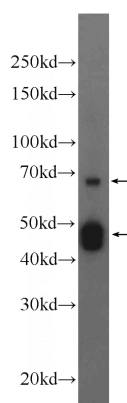
## Dilutions

Recommended Dilution:

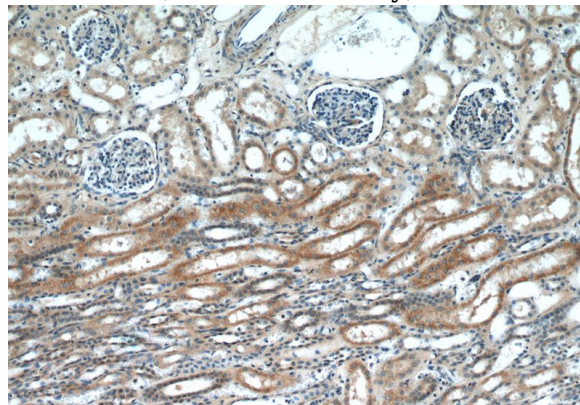
WB: 1:200-1:1000

IHC: 1:20-1:200

## Validations



mouse liver tissue were subjected to SDS PAGE followed by western blot with Catalog No:109693(CYP2D6 Antibody) at dilution of 1:300



Immunohistochemical of paraffin-embedded human kidney using Catalog No:109693(CYP2D6 antibody) at dilution of 1:50 (under 10x lens)