

Anti-MID1IP1 antibody



Catalog Number: 106693

Product name

Anti-MID1IP1 antibody

Immunogen

[Human MID1IP1 \(His Tag\) recombinant protein](#)

Specificity

Human MID1IP1

Antibody description

Rabbit polyclonal to MID1IP1

Preparation

Produced in rabbits immunized with purified, recombinant Human MID1IP1 (rh MID1IP1; Q9NPA3; Met1-His183). MID1IP1 specific IgG was purified by Human MID1IP1 affinity chromatography.

Formulation

0.2 µm filtered solution in PBS

Storage

This antibody can be stored at 2°C-8°C for one month without detectable loss of activity. Antibody products are stable for twelve months from date of receipt when stored at -20°C to -80°C.

Preservative-Free.

Sodium azide is recommended to avoid contamination (final concentration 0.05%-0.1%). It is toxic to cells and should be disposed of properly. Avoid repeated freeze-thaw cycles.

Clonality

Polyclonal

Ig Type

Rabbit IgG

Applications

ELISA, WB, IP

Dilutions

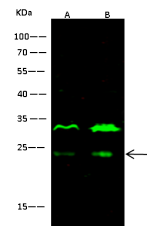
WB: 5-10 µg/ml

ELISA:0.1-0.2 µg/mL

This antibody can be used at 0.1-0.2 µg/mL with the appropriate secondary reagents to detect Human MID1IP1. The detection limit for Human MID1IP1 is < 0.039 ng/well.

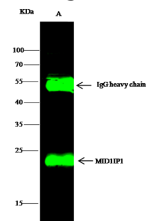
IP: 1-4 µg/mg of lysate

Validations



Lanes	A	B
Items		
Sample (whole cell lysate)	293T	HepG2
Sample Volume (µg/lane)	30	30
Gel	13% SDS-PAGE reducing gel	
Recommended Concentration	5-10 µg/ml	
Secondary Antibody	Dylight 800-labeled Antibody To Rabbit IgG (H+L), at 1:5000 dilution.	

MID1IP1 Antibody, Rabbit PAb, Antigen Affinity



Lanes	A
Items	
Sample (wholecell lysate)	HepG2
Sample quantity	0.5 mg
IP antibody quantity	2 µg
Protein G Agarose	15 µl of 50% Protein G Agarose
Gel	13% SDS-PAGE reducing gel
Primary antibody	MID1IP1 antibody at 4 µg/ml
Secondary antibody	Dylight 800-labeled antibody to rabbit IgG (H+L), at 1:5000 dilution.

Purified, Western blot

MID1IP1 Antibody, Rabbit PAb, Antigen Affinity

Purified, Immunoprecipitation