

Anti-c-Jun Rabbit antibody



Catalog Number: 166693

Product name

Anti-c-Jun Rabbit antibody

Specificity

Human, Mouse, Rat

Antibody description

c-Jun Rabbit polyclonal antibody

Preparation

Antigen: The antiserum was produced against synthesized peptide derived from human c-Jun. AA range:58-107

Formulation

Liquid in PBS containing 50% glycerol, 0.5% BSA and 0.02% sodium azide.

Storage

Store at 4°C short term. Store at -20°C long term. Avoid freeze / thaw cycle.

Clonality

Polyclonal

Ig Type

Rabbit IgG

Applications

ICC/IF, WB, IHC-P, IP, ELISA

Dilutions

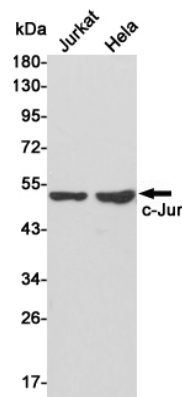
IF: 1/50-200

WB: 1/500 - 1/2000

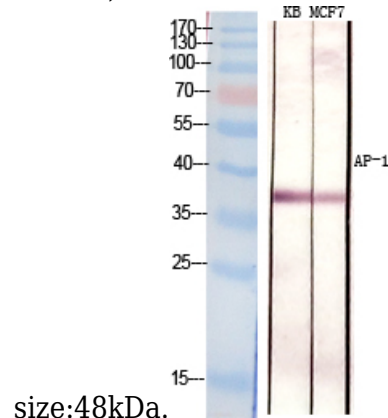
IHC: 1/100 - 1/300

ELISA: 1/20000

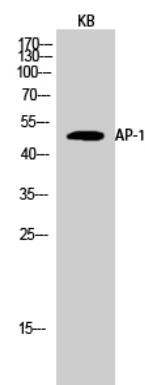
Validations



Western blot detection of c-Jun in Jurkat and HeLa cell lysates using c-Jun rabbit pAb (1:500 diluted). Predicted band size:38kDa. Observed band



Western Blot analysis of KB MCF7 cells using AP-1



Polyclonal Antibody

Western Blot analysis of KB cells using AP-1 Polyclonal Antibody