

# MME,CD10 antibody



Catalog Number: 112693

## Product name

MME,CD10 antibody

WB: 1:200-1:2000

IHC: 1:20-1:200

## Specificity

Human,Mouse,Rat; other species not tested.

## Antibody description

MME,CD10 Rabbit Polyclonal antibody. Positive IHC detected in human kidney tissue, human hepat°Cirrhosis tissue, human liver cancer tissue, human renal cell carcinoma tissue. Positive FC detected in Jurkat cells. Positive WB detected in mouse kidney tissue, HEK-293 cells. Observed molecular weight by Western-blot: 90-100kd

## Preparation

This antibody was obtained by immunization of MME,CD10 recombinant protein (Accession Number: NM\_001354643). Purification method: Antigen affinity purified.

## Formulation

PBS with 0.02% sodium azide and 50% glycerol pH 7.3.

## Storage

Store at -20°C. DO NOT ALIQUOT

## Clonality

Polyclonal

## Ig Type

Rabbit IgG

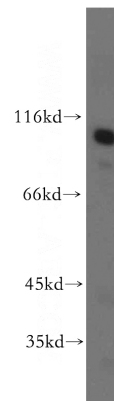
## Applications

ELISA, WB, IHC, FC

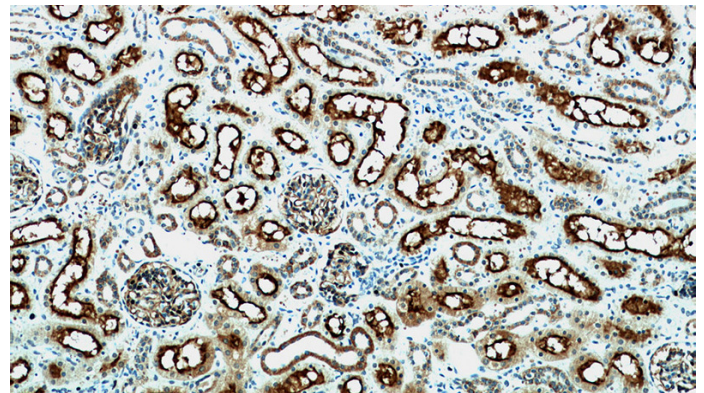
## Dilutions

Recommended Dilution:

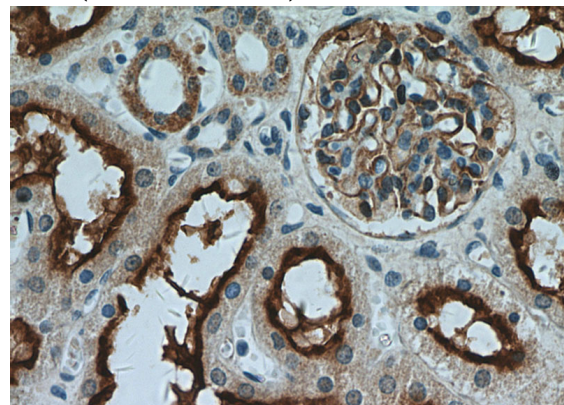
## Validations



mouse kidney tissue were subjected to SDS PAGE followed by western blot with Catalog No:112693(MME,CD10 antibody) at dilution of 1:500



Immunohistochemical of paraffin-embedded human kidney using Catalog No:112693(MME,CD10 antibody) at dilution of 1:50 (under 10x lens)

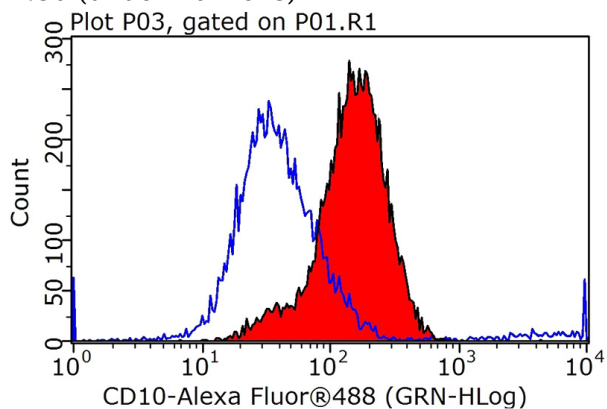


# MME,CD10 antibody



Catalog Number: 112693

Immunohistochemical of paraffin-embedded human kidney using Catalog No:112693(MME,CD10 antibody) at dilution of 1:50 (under 40x lens)



1X10<sup>6</sup> Jurkat cells were stained with 0.2ug MME,CD10 antibody (Catalog No:112693, red) and control antibody (blue). Fixed with 90% MeOH blocked with 3% BSA (30 min). Alexa Fluor 488-conjugated AffiniPure Goat Anti-Rabbit IgG(H+L) with dilution 1:1000.