

# Cynomolgus NKp80 / KLRF1 (Fc Tag) recombinant protein



Catalog Number: 502693

## General Information

### Gene Name Synonym

Activating coreceptor NKp80

### Protein Construction

A DNA sequence encoding the cynomolgus KLRF1(Q8MI05) (Val66-Tyr231) was expressed with the Fc region of human IgG1 at the C-terminus.

### Organism

cynomolgus

### Expression Host

Human Cells

## QC Testing

### Activity

Measured by the ability of the immobilized protein to support the adhesion of U937 human histiocytic lymphoma cells.

When 5 x 10<sup>4</sup> cells/well are added to KLRF1 coated plates (5 µg/mL with 100 µL/well), > 40% cells will adhere for 1 hour incubation at 37°C.

### Purity

> 90 % as determined by SDS-PAGE

### Endotoxin

< 1.0 EU per µg of the protein as determined by the LAL method

### Stability

Samples are stable for up to twelve months from date of receipt at -70°C

### Predicted N terminal

Glu

### Molecular Mass

The recombinant cynomolgus KLRF1 comprises 426 amino acids and has a calculated molecular mass of 47.8 KDa. The apparent molecular mass of the protein is approximately 59 KDa respectively in SDS-PAGE.

### Formulation

Lyophilized from sterile PBS, PH 7.4.

1. 5 % trehalose and mannitol are added as protectants before lyophilization.

2. Please contact us for any concerns or special requirements.

## Usage Guide

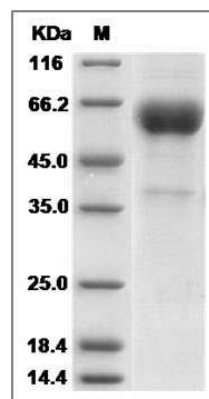
### Storage

Store it under sterile conditions at -20°C to -80°C. It is recommended that the protein be aliquoted for optimal storage. Avoid repeated freeze-thaw cycles.

### Reconstitution

Adding sterile water, prepare a stock solution of 0.25 mg/ml. Concentration is measured by UV-Vis.

### SDS-PAGE



Cynomolgus NKp80 / KLRF1 Protein (Fc Tag)  
SDS-PAGE