

# Human Ephrin-A1/EFNA1 (His & Fc Tag) recombinant protein



Catalog Number: 503293

## General Information

### Gene Name Synonym

EPH-related receptor tyrosine kinase ligand 1; Immediate early response protein B61; Tumor necrosis factor alpha-induced protein 4; Ephrin-A1, secreted form

### Protein Construction

A DNA sequence encoding the human EphrinA1 (NP\_004419.2) without the propeptide (Met1-Ser182) was fused with the C-terminal polyhistidine-tagged Fc region of human IgG1 at the C-terminus.

### Organism

Human

### Expression Host

Human Cells

## QC Testing

### Activity

Measured by its binding ability in a functional ELISA. Immobilized mouse EphA2 at 2 µg/ml (100 µl/well) can bind human EphrinA1 with a linear range of 0.8-20 ng/ml.

### Purity

> 85 % as determined by SDS-PAGE

### Endotoxin

< 1.0 EU per µg of the protein as determined by the LAL method

### Stability

Samples are stable for up to twelve months from date of receipt at -70°C

### Predicted N terminal

Asp 19

### Molecular Mass

The recombinant human EphrinA1/Fc chimera is a disulfide-linked homodimer. The reduced monomer comprises 412 amino acids a predicted molecular mass of 47.5 kDa. As a result of glycosylation, rh EphrinA1/Fc monomer migrates as an approximately 50-55 kDa band in SDS-PAGE under reducing conditions.

### Formulation

Lyophilized from sterile PBS, pH 7.4

1. 5 % trehalose and mannitol are added as protectants before lyophilization.

2. Please contact us for any concerns or special requirements.

## Usage Guide

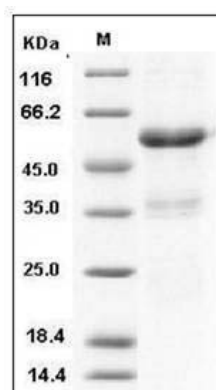
### Storage

Store it under sterile conditions at -20°C to -80°C. It is recommended that the protein be aliquoted for optimal storage. Avoid repeated freeze-thaw cycles.

### Reconstitution

Adding sterile water, prepare a stock solution of 0.25 mg/ml. Concentration is measured by UV-Vis.

### SDS-PAGE



Human Ephrin-A1 / EFNA1 Protein (His & Fc Tag)

# Human Ephrin-A1/EFNA1 (His & Fc Tag) recombinant protein



Catalog Number: 503293

---

SDS-PAGE