

LOC55908 antibody



Catalog Number: 112293

Product name

LOC55908 antibody

Specificity

Human; other species not tested.

Antibody description

LOC55908 Rabbit Polyclonal antibody. Positive WB detected in Transfected HEK-293 cells. Positive IHC detected in human liver cancer tissue, human liver tissue.

Preparation

This antibody was obtained by immunization of L^oC55908 recombinant protein (Accession Number: BC146552). Purification method: Antigen Affinity purified.

Formulation

PBS with 0.02% sodium azide and 50% glycerol pH 7.3.

Storage

Store at -20°C. DO NOT ALIQUOT

Clonality

Polyclonal

Ig Type

Rabbit IgG

Applications

ELISA, WB, IHC

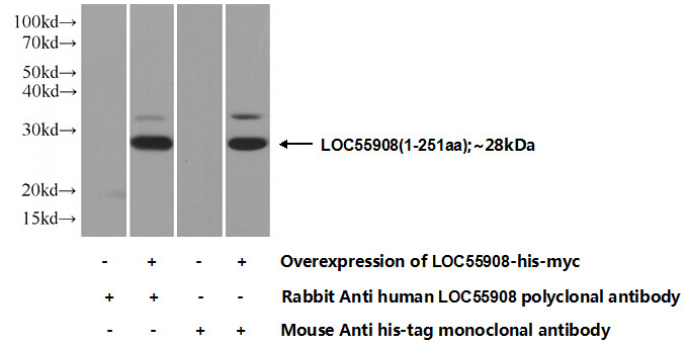
Dilutions

Recommended Dilution:

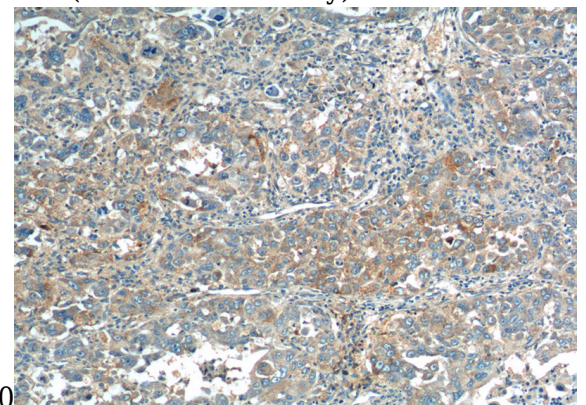
WB: 1:500-1:5000

IHC: 1:20-1:200

Validations

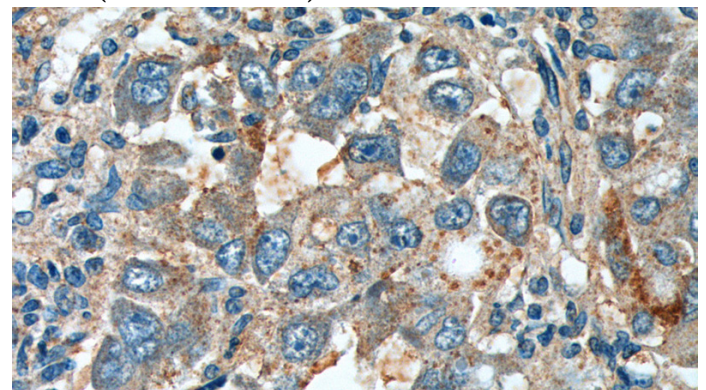


Transfected HEK-293 cells were subjected to SDS PAGE followed by western blot with Catalog No:112293(Loc55908 Antibody) at dilution of



1:1000

Immunohistochemistry of paraffin-embedded human liver cancer tissue slide using Catalog No:112293(Loc55908 Antibody) at dilution of 1:200 (under 10x lens).



Immunohistochemistry of paraffin-embedded human liver cancer tissue slide using Catalog No:112293(Loc55908 Antibody) at dilution of 1:200 (under 40x lens).