

ECCHS1 antibody

Catalog Number: 110293

Product name

ECCHS1 antibody

Specificity

Human, Mouse, Rat; other species not tested.

Antibody description

ECCHS1 Rabbit Polyclonal antibody. Positive WB detected in human liver tissue, HeLa cells, HepG2 cells, HT-1080 cells, L02 cells, mouse liver tissue, PC-3 cells, rat heart tissue. Positive IP detected in PC-3 cells. Positive IHC detected in human prostate cancer tissue, human liver tissue. Observed molecular weight by Western-blot: 31 kDa

Preparation

This antibody was obtained by immunization of ECCHS1 recombinant protein (Accession Number: NM_004092). Purification method: Antigen affinity purified.

Formulation

PBS with 0.1% sodium azide and 50% glycerol pH 7.3.

Storage

Store at -20°C. DO NOT ALIQUOT

Clonality

Polyclonal

Ig Type

Rabbit IgG

Applications

ELISA, WB, IHC, IP

Dilutions

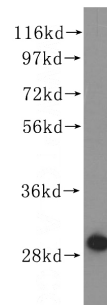
Recommended Dilution:

WB: 1:500-1:5000

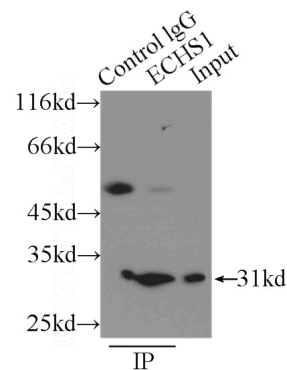
IP: 1:200-1:2000

IHC: 1:20-1:200

Validations



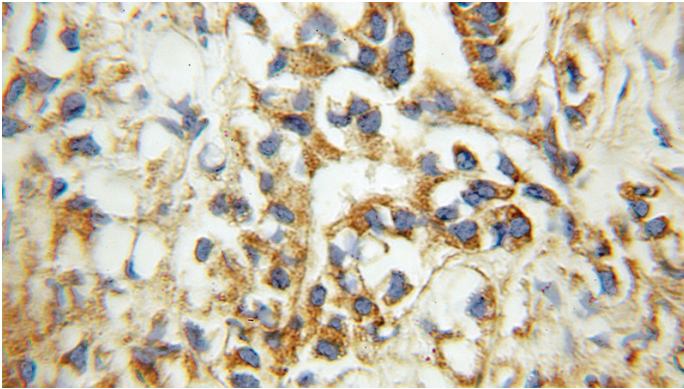
human liver tissue were subjected to SDS PAGE followed by western blot with Catalog No:110293 (ECCHS1 antibody) at dilution of 1:1200



IP Result of anti-ECCHS1 (IP: Catalog No:110293, 3ug; Detection: Catalog No:110293 1:500) with PC-3 cells lysate 3000ug.

ECHS1 antibody

Catalog Number: 110293



Immunohistochemical of paraffin-embedded human prostate cancer using Catalog No:110293(ECHS1 antibody) at dilution of 1:100 (under 10x lens)