

# Anti-WTAP Rabbit antibody



Catalog Number: 168993

## Product name

Anti-WTAP Rabbit antibody

## Applications

WB, IHC-P, ICC/IF, FC, IP

## Specificity

Human

## Dilutions

1:1000

## Antibody description

1:20

WTAP Rabbit monoclonal antibody

1:50

## Preparation

1:100

Antigen: Recombinant protein of human WTAP

1:20

## Formulation

## Validations

Supplied in 50nM Tris-Glycine(pH 7.4), 0.15M NaCl, 40%Glycerol, 0.01% sodium azide and 0.05% BSA.

## Storage

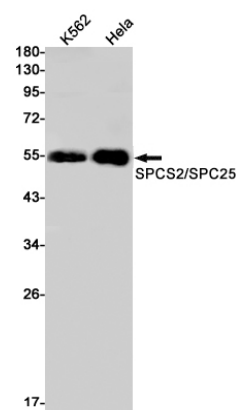
Store at 4°C short term. Aliquot and store at -20°C long term. Avoid freeze / thaw cycle.

## Clonality

Monoclonal

## Ig Type

Rabbit IgG



Western blot detection of SPCS2/SPC25 in K562, HeLa cell lysates using SPCS2/SPC25 Rabbit mAb(1:1000 diluted). Predicted band size: 44kDa. Observed band size: 55kDa.