

# ADAM11 Polyclonal Antibody

Catalog Number: 161993

## Product name

ADAM11 Polyclonal Antibody

## Specificity

Human, Mouse, Rat

## Antibody description

Polyclonal antibody to ADAM11

## Preparation

Antigen: Recombinant fusion protein containing a sequence corresponding to amino acids 290-430 of human ADAM11 (NP\_002381.2).

## Formulation

PBS with 0.02% sodium azide, 50% glycerol, pH7.3.

## Storage

Store at -20°C. Avoid freeze / thaw cycles.

## Clonality

Polyclonal

## Ig Type

Rabbit IgG

## Applications

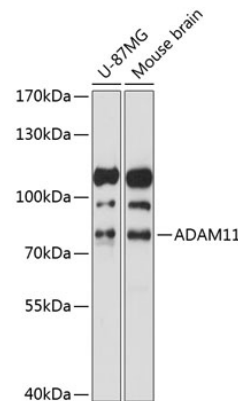
WB, IF

## Dilutions

WB 1:500 - 1:2000

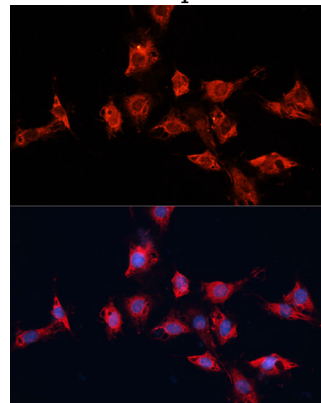
IF 1:50 - 1:200

## Validations



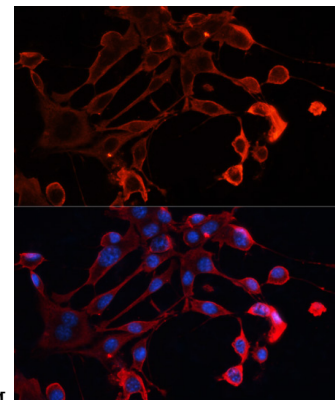
## Western blot - ADAM11 Polyclonal Antibody

Western blot analysis of extracts of various cell lines, using ADAM11 antibody at 1:1000 dilution. Secondary antibody: HRP Goat Anti-Rabbit IgG (H+L) at 1:10000 dilution. Lysates/proteins: 25ug per lane. Blocking buffer: 3% nonfat dry milk in TBST. Detection: ECL Basic Kit. Exposure time: 15s.



## Immunofluorescence - ADAM11 Polyclonal Antibody

Immunofluorescence analysis of C6 cells using ADAM11 antibody at dilution of 1:100. Blue: DAPI



for nuclear staining.

# ADAM11 Polyclonal Antibody



Catalog Number: 161993

---

Immunofluorescence - ADAM11 Polyclonal Antibody

Immunofluorescence analysis of NIH/3T3 cells using ADAM11 antibody at dilution of 1:100. Blue: DAPI for nuclear staining.