

CSE1L antibody

Catalog Number: 109593

Product name

CSE1L antibody

WB: 1:500-1:5000

IHC: 1:20-1:200

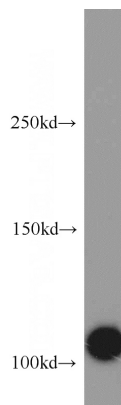
Specificity

Human, Mouse; other species not tested.

Validations

Antibody description

CSE1L Rabbit Polyclonal antibody. Positive IHC detected in human breast cancer tissue, human lymphoma tissue, human placenta tissue, human testis tissue. Positive WB detected in HeLa cells, HEK-293 cells, Jurkat cells, MCF7 cells, mouse testis tissue, RAW264.7 cells. Observed molecular weight by Western-blot: 100-110 kDa



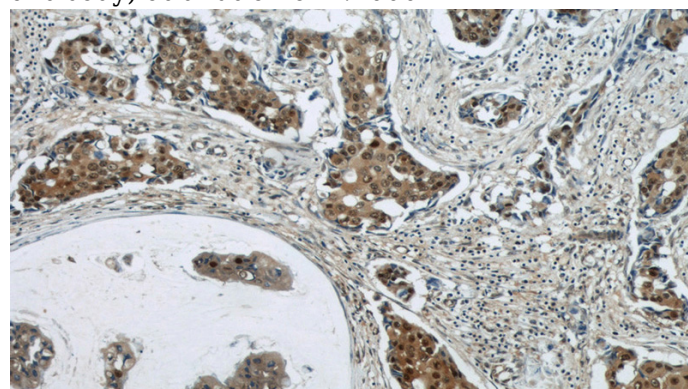
Preparation

This antibody was obtained by immunization of CSE1L recombinant protein (Accession Number: NM_001316). Purification method: Antigen affinity purified.

HeLa cells were subjected to SDS PAGE followed by western blot with Catalog No:109593(CSE1L antibody) at dilution of 1:1000

Formulation

PBS with 0.02% sodium azide and 50% glycerol pH 7.3.



Storage

Store at -20°C. DO NOT ALIQUOT

Immunohistochemical of paraffin-embedded human breast cancer using Catalog No:109593(CSE1L antibody) at dilution of 1:50 (under 10x lens)

Clonality

Polyclonal

Ig Type

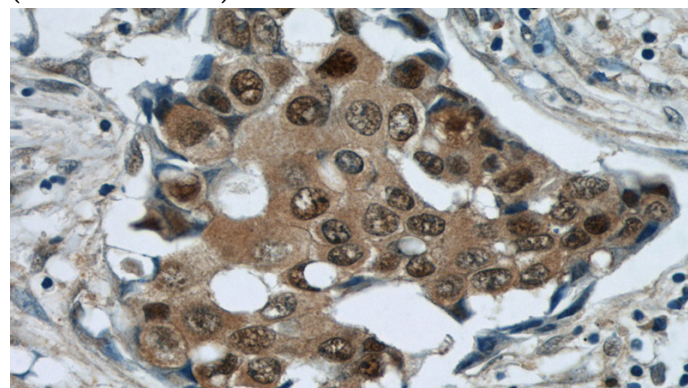
Rabbit IgG

Applications

ELISA, WB, IHC

Dilutions

Recommended Dilution:



Immunohistochemical of paraffin-embedded

CSE1L antibody



Catalog Number: 109593

human breast cancer using Catalog

No:109593(CSE1L antibody) at dilution of 1:50
(under 40x lens)