

SRP54 antibody

Catalog Number: 115593

Product name

SRP54 antibody

IP: 1:200-1:2000

IHC: 1:20-1:200

Specificity

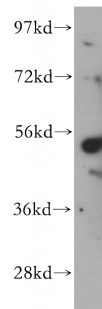
Human, Mouse, Rat; other species not tested.

IF: 1:10-1:100

Validations

Antibody description

SRP54 Rabbit Polyclonal antibody. Positive WB detected in HeLa cells, NIH/3T3 cells. Positive IP detected in HeLa cells. Positive IF detected in HepG2 cells. Positive IHC detected in human breast cancer tissue. Observed molecular weight by Western-blot: 54 kDa



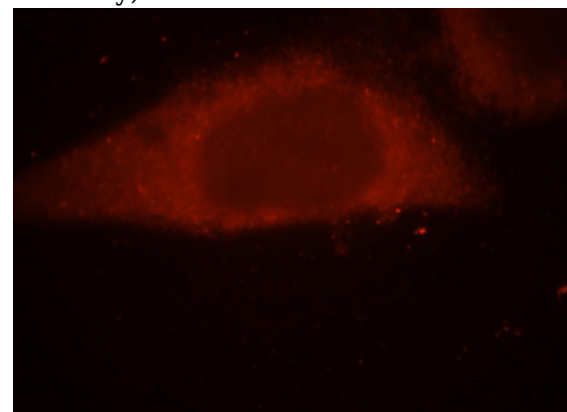
Preparation

This antibody was obtained by immunization of SRP54 recombinant protein (Accession Number: XM_011537106). Purification method: Antigen affinity purified.

HeLa cells were subjected to SDS PAGE followed by western blot with Catalog No:115593(SRP54 antibody) at dilution of 1:500

Formulation

PBS with 0.02% sodium azide and 50% glycerol pH 7.3.



Storage

Store at -20°C. DO NOT ALIQUOT

Clonality

Polyclonal

Ig Type

Rabbit IgG

Applications

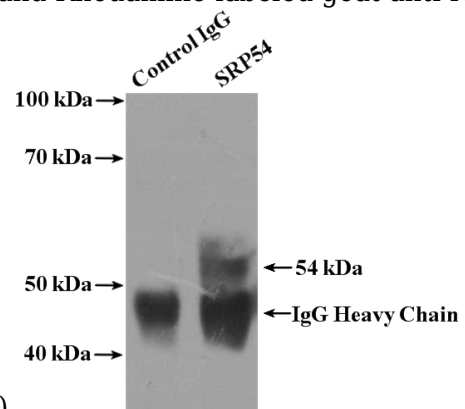
ELISA, WB, IF, IHC, IP

Dilutions

Recommended Dilution:

WB: 1:200-1:2000

Immunofluorescent analysis of HepG2 cells, using SRP54 antibody Catalog No:115593 at 1:25 dilution and Rhodamine-labeled goat anti-rabbit

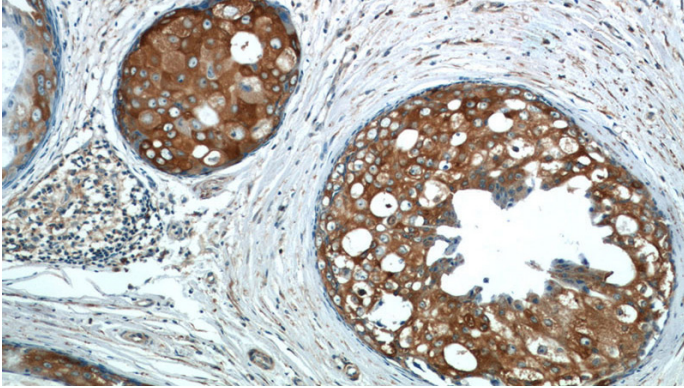


IgG (red).

SRP54 antibody

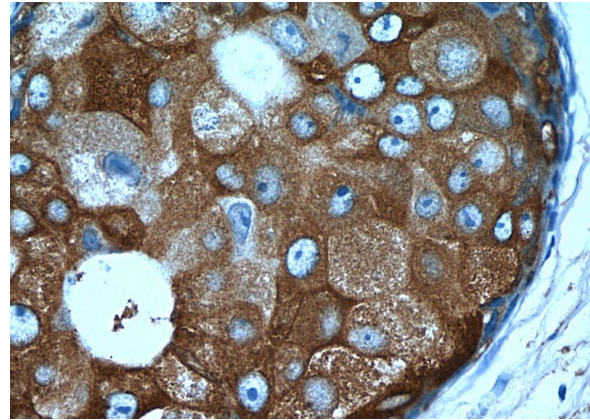
Catalog Number: 115593

IP Result of anti-SRP54 (IP:Catalog No:115593, 4ug; Detection:Catalog No:115593 1:500) with HeLa cells lysate 1600ug.



Immunohistochemistry of paraffin-embedded human breast cancer tissue slide using Catalog No:115593(SRP54 Antibody) at dilution of 1:50

(under 10x lens)



Immunohistochemistry of paraffin-embedded human breast cancer tissue slide using Catalog No:115593(SRP54 Antibody) at dilution of 1:50 (under 40x lens)