

SERINC2-Specific antibody



Catalog Number: 115193

Product name

SERINC2-Specific antibody

Specificity

human, mouse, rat; other species not tested.

Antibody description

SERINC2-Specific Rabbit Polyclonal antibody.
Positive WB detected in HepG2 cells, HeLa cells, MCF7 cells. Observed molecular weight by Western-blot: 65kd

Preparation

This antibody was obtained by immunization of Peptide (Accession Number: NM_178865).
Purification method: Antigen affinity purified.

Formulation

PBS with 0.02% sodium azide and 50% glycerol pH 7.3.

Storage

Store at -20°C. DO NOT ALIQUOT

Clonality

Polyclonal

Ig Type

Rabbit IgG

Applications

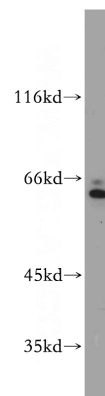
ELISA, WB

Dilutions

Recommended Dilution:

WB: 1:200-1:2000

Validations



HepG2 cells were subjected to SDS PAGE followed by western blot with Catalog No:115193(SERINC2-Specific antibody) at dilution of 1:100