

# Anti-EBOV-G antibody



Catalog Number: 141193

## Product name

Anti-EBOV-G antibody

## Immunogen

[EBOV EBOV-G / Glycoprotein \(His Tag\)](#)

## Specificity

Ebola virus EBOV (subtype Zaire, strain H.sapiens-wt/GIN/2014/Kissidougou-C15) Glycoprotein / GP

## Antibody description

Rabbit Polyclonal to EBOV EBOV-G

## Preparation

Produced in rabbits immunized with purified, recombinant Ebola virus EBOV (subtype Zaire, strain H.sapiens-wt/GIN/2014/Kissidougou-C15) Glycoprotein / GP . Ebola virus EBOV (subtype Zaire, strain H.sapiens-wt/GIN/2014/Kissidougou-C15) Glycoprotein / GP specific IgG was purified by Ebola virus EBOV (subtype Zaire, strain H.sapiens-wt/GIN/2014/Kissidougou-C15) Glycoprotein / GP affinity chromatography.

## Formulation

0.2 µm filtered solution in PBS

## Storage

This antibody can be stored at 2°C-8°C for one month without detectable loss of activity. Antibody products are stable for twelve months from date of receipt when stored at -20°C to -80°C. Preservative-Free. Sodium azide is recommended to avoid contamination (final concentration 0.05%-0.1%). It

is toxic to cells and should be disposed of properly. Avoid repeated freeze-thaw cycles.

## Clonality

Polyclonal

## Ig Type

Rabbit IgG

## Applications

WB, ELISA

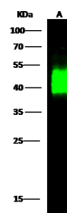
## Dilutions

WB: 0.1-1 µg/ml

ELISA: 0.1-0.2 µg/ml

This antibody can be used at 0.1-0.2 µg/ml with the appropriate secondary reagents to detect Ebola virus EBOV (subtype Zaire, strain H.sapiens-wt/GIN/2014/Kissidougou-C15) Glycoprotein / GP.

## Validations



Items	Lanes	A
Sample (Recombinant protein)		Ebola virus EBOV (Cat#40442-V08B1)
Sample Volume (ng/lane)		10
Get		13% SDS-PAGE reducing gel
Recommended Concentration		0.1-1µg/ml
Secondary Antibody		Dylight 800 labeled Antibody To Rabbit IgG (1:1), at 1:5000 dilution.

Developed using Odyssey imaging system.

Ebola virus EBOV (subtype Zaire, strain H.sapiens-wt/GIN/2014/Kissidougou-C15) Glycoprotein / GP Antibody, Rabbit PAb, Antigen Affinity Purified, Western blot