

Cathepsin K antibody



Catalog Number: 108893

Product name

Cathepsin K antibody

Recommended Dilution:

WB: 1:500-1:5000

Specificity

Human, Mouse, Rat; other species not tested.

IP: 1:200-1:2000

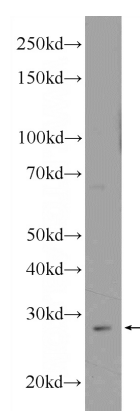
IHC: 1:20-1:200

Antibody description

Cathepsin K Rabbit Polyclonal antibody. Positive IF detected in ROS1728 cells, HepG2 cells. Positive IHC detected in human breast cancer tissue, human lung cancer tissue, human osteosarcoma tissue. Positive IP detected in ROS1728 cells. Positive WB detected in ROS1728 cells, mouse uterus tissue. Observed molecular weight by Western-blot: 29-36 kDa

IF: 1:20-1:200

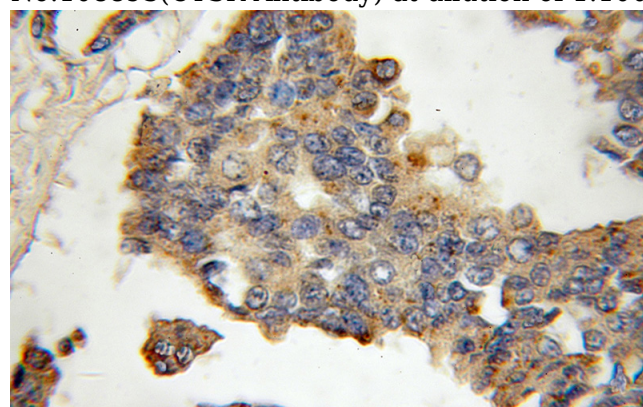
Validations



ROS1728 cells were subjected to SDS PAGE followed by western blot with Catalog No:108893(CTSK Antibody) at dilution of 1:1000

Preparation

This antibody was obtained by immunization of Cathepsin K recombinant protein (Accession Number: NM_000396). Purification method: Antigen affinity purified.



Immunohistochemical of paraffin-embedded human breast cancer using Catalog No:108893(CTSK antibody) at dilution of 1:100 (under 10x lens)

Formulation

PBS with 0.1% sodium azide and 50% glycerol pH 7.3.

Storage

Store at -20°C. DO NOT ALIQUOT

Clonality

Polyclonal

Ig Type

Rabbit IgG

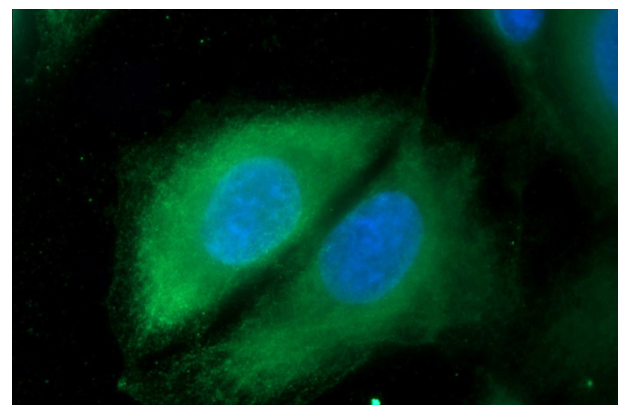
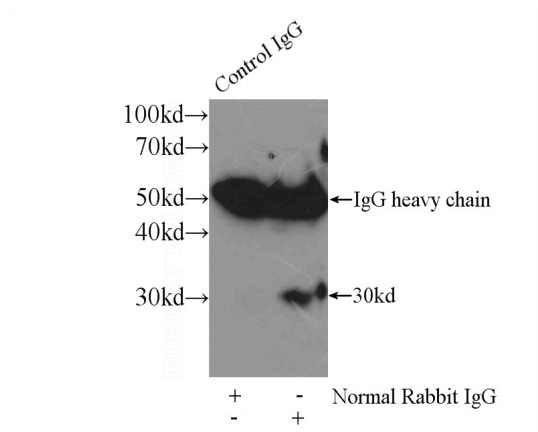
Applications

ELISA, IHC, WB, IP, IF

Dilutions

Cathepsin K antibody

Catalog Number: 108893



Immunofluorescent analysis of ROS1728 cells using Catalog No:108893(CTSK Antibody) at dilution of 1:50 and Alexa Fluor 488-conjugated AffiniPure Goat Anti-Rabbit IgG(H+L)

IP Result of anti-CTSK (IP:Catalog No:108893, 3ug; Detection:Catalog No:108893 1:500) with ROS1728 cells lysate 3200ug.