

# Anti-MCM7 Rabbit antibody



Catalog Number: 168893

## Product name

Rabbit IgG

Anti-MCM7 Rabbit antibody

## Applications

## Specificity

WB, ICC/IF, FC

Human

## Dilutions

## Antibody description

1:1000

MCM7 Rabbit monoclonal antibody

1:20-1:50

## Preparation

1:20

Antigen: A synthetic peptide of human MCM7

## Formulation

Supplied in 50nM Tris-Glycine(pH 7.4), 0.15M NaCl, 40%Glycerol, 0.01% sodium azide and 0.05% BSA.

## Storage

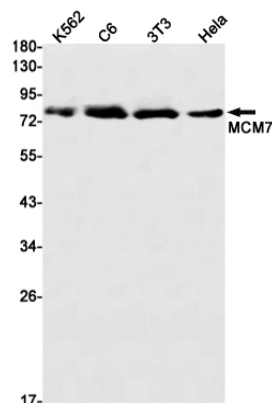
Store at 4°C short term. Aliquot and store at -20°C long term. Avoid freeze / thaw cycle.

## Clonality

Monoclonal

## Ig Type

## Validations



Western blot detection of MCM7 in K562,C6,3T3,HeLa cell lysates using MCM7 Rabbit mAb(1:1000 diluted).Predicted band size:81kDa.Observed band size:81kDa.