

Adrenomedullin antibody



Catalog Number: 107893

Product name

Adrenomedullin antibody

WB: 1:500-1:5000

IHC: 1:20-1:200

Specificity

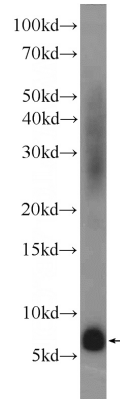
Human; other species not tested.

IF: 1:10-1:100

Antibody description

Adrenomedullin Rabbit Polyclonal antibody. Positive IF detected in A549 cells. Positive IHC detected in human kidney tissue, human pancreas cancer tissue. Positive WB detected in human kidney tissue, A549 cells, fetal human brain tissue, human placenta tissue. Observed molecular weight by Western-blot: 6-8 kDa

Validations



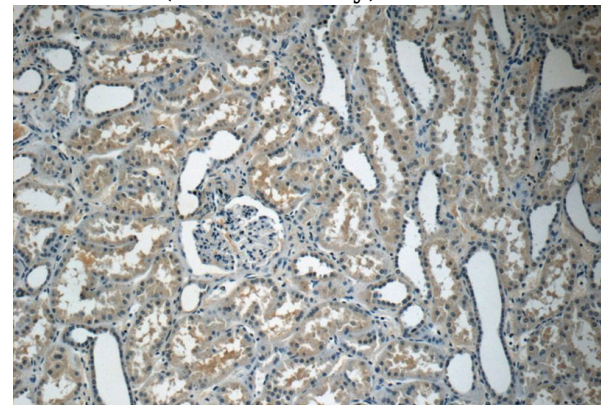
Preparation

This antibody was obtained by immunization of Adrenomedullin recombinant protein (Accession Number: NM_001124). Purification method: Antigen affinity purified.

human kidney tissue were subjected to SDS PAGE followed by western blot with Catalog No:107893(ADM Antibody) at dilution of 1:1000

Formulation

PBS with 0.1% sodium azide and 50% glycerol pH 7.3.



Storage

Store at -20°C. DO NOT ALIQUOT

Clonality

Polyclonal

Immunohistochemistry of paraffin-embedded human kidney tissue slide using Catalog No:107893(ADM Antibody) at dilution of 1:50 (under 10x lens)

Ig Type

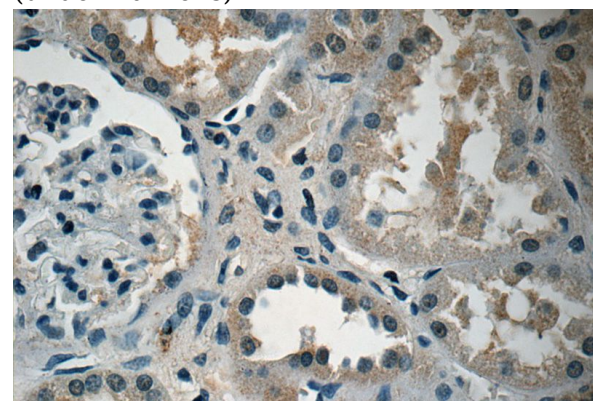
Rabbit IgG

Applications

ELISA, IHC, WB, IF

Dilutions

Recommended Dilution:

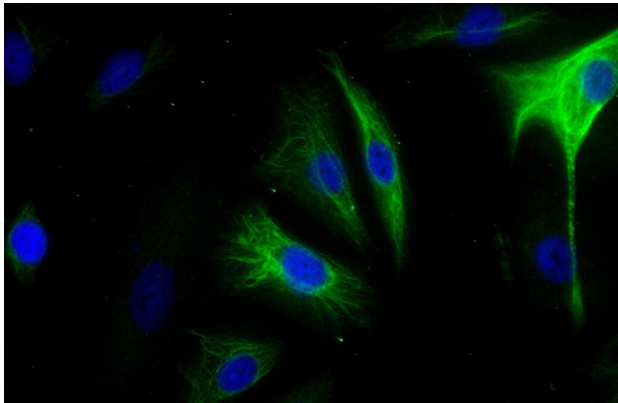


Adrenomedullin antibody



Catalog Number: 107893

Immunohistochemistry of paraffin-embedded human kidney tissue slide using Catalog No:107893(ADM Antibody) at dilution of 1:50 (under 40x lens)



Immunofluorescent analysis of (-20oc Ethanol) fixed A549 cells using Catalog No:107893(ADM Antibody) at dilution of 1:25 and Alexa Fluor 488-conjugated AffiniPure Goat Anti-Rabbit IgG(H+L)