

# YTHDC1 antibody



Catalog Number: 116893

## Product name

Polyclonal

YTHDC1 antibody

## Ig Type

## Specificity

Rabbit IgG

Human, Mouse, Rat; other species not tested.

## Applications

## Antibody description

ELISA, WB

YTHDC1 Rabbit Polyclonal antibody. Positive WB detected in MCF-7 cells, mouse tissue. Observed molecular weight by Western-blot: 110 kDa

## Dilutions

Recommended Dilution:

## Preparation

WB: 1:200-1:1000

This antibody was obtained by immunization of YTHDC1 recombinant protein (Accession Number: NM\_133370). Purification method: Antigen affinity purified.

## Validations

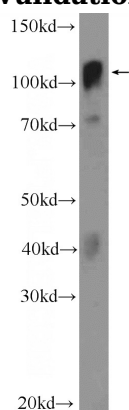
## Formulation

PBS with 0.1% sodium azide and 50% glycerol pH 7.3.

## Storage

Store at -20°C. DO NOT ALIQUOT

## Clonality



MCF-7 cells were subjected to SDS PAGE followed by western blot with Catalog No:116893(YTHDC1 Antibody) at dilution of 1:300