

RPL37A antibody



Catalog Number: 114893

Product name

RPL37A antibody

IHC: 1:20-1:200

IF: 1:20-1:200

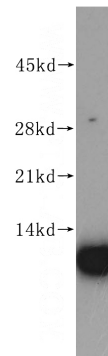
Specificity

Human, Mouse, Rat; other species not tested.

Validations

Antibody description

RPL37A Rabbit Polyclonal antibody. Positive WB detected in MCF7 cells, SH-SY5Y cells. Positive IHC detected in human breast cancer tissue. Positive IF detected in SH-SY5Y cells. Observed molecular weight by Western-blot: 10 kDa



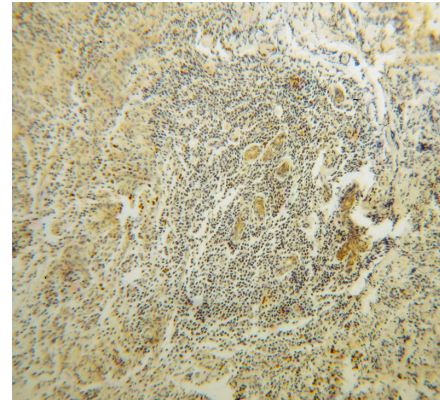
Preparation

This antibody was obtained by immunization of RPL37A recombinant protein (Accession Number: BC063476). Purification method: Antigen affinity purified.

MCF7 cells were subjected to SDS PAGE followed by western blot with Catalog No:114893(RPL37A antibody) at dilution of 1:400

Formulation

PBS with 0.02% sodium azide and 50% glycerol pH 7.3.



Storage

Store at -20°C. DO NOT ALIQUOT

Clonality

Polyclonal

Immunohistochemical of paraffin-embedded human breast cancer using Catalog No:114893(RPL37A antibody) at dilution of 1:100 (under 10x lens)

Ig Type

Rabbit IgG

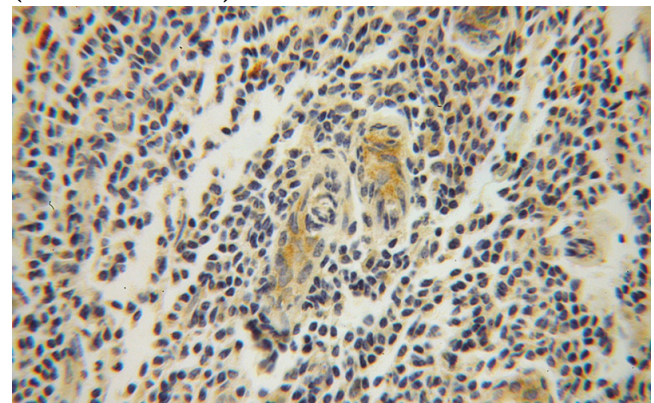
Applications

ELISA, WB, IHC, IF

Dilutions

Recommended Dilution:

WB: 1:500-1:5000

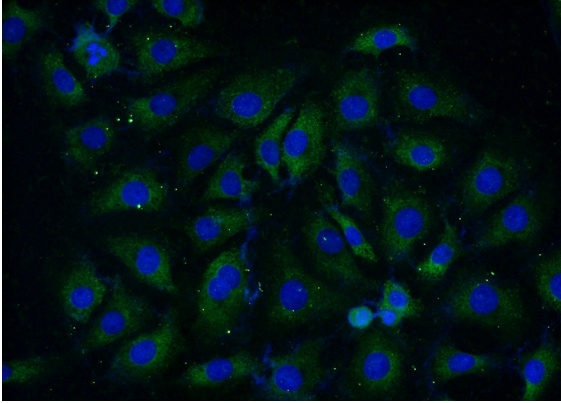


Immunohistochemical of paraffin-embedded

RPL37A antibody

Catalog Number: 114893

human breast cancer using Catalog
No:114893(RPL37A antibody) at dilution of 1:100
(under 40x lens)



Immunofluorescent analysis of (-20oc Ethanol)
fixed SH-SY5Y cells using Catalog
No:114893(RPL37A Antibody) at dilution of 1:50
and Alexa Fluor 488-conjugated AffiniPure Goat
Anti-Rabbit IgG(H+L)