

Human Contactin 2/CNTN2 (His Tag) recombinant protein



Catalog Number: 502893

General Information

Protein Construction

A DNA sequence encoding the human CNTN2 (NP_005067.1) precursor (Met 1-Asn 1012) was expressed with a polyhistidine tag at the C-terminus.

Organism

Human

Expression Host

Human Cells

QC Testing

Activity

Measured by the ability of the immobilized protein to support the adhesion of C6 Rat brain glial cells. When 5×10^4 cells/well are added to CNTN2 coated plates (0.8 $\mu\text{g}/\text{ml}$ and 100 $\mu\text{l}/\text{well}$), approximately 40%-60% will adhere specifically after 60 minutes at 37°C.

Purity

> 95 % as determined by SDS-PAGE

Endotoxin

< 1.0 EU per μg of the protein as determined by the LAL method

Stability

Samples are stable for up to twelve months from date of receipt at -70°C

Predicted N terminal

Ser 31

Molecular Mass

The secreted recombinant human CNTN2 is a monomeric protein after cleavage of the signal peptide. It consists of 993 amino acids and predicts a molecular mass of 109 kDa. In SDS-PAGE under reducing conditions, it migrates with the apparent molecular mass of 140 kDa due to glycosylation.

Formulation

Lyophilized from sterile 100mM Glycine, 10mM NaCl, 50mM Tris, pH 7.5

1. 5 % trehalose and mannitol are added as protectants before lyophilization.

2. Please contact us for any concerns or special requirements.

Usage Guide

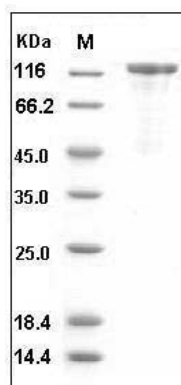
Storage

Store it under sterile conditions at -20°C to -80°C. It is recommended that the protein be aliquoted for optimal storage. Avoid repeated freeze-thaw cycles.

Reconstitution

Adding sterile water, prepare a stock solution of 0.25 mg/ml. Concentration is measured by UV-Vis.

SDS-PAGE



Human Contactin 2 / CNTN2 Protein (His Tag)
SDS-PAGE