

Anti-BIN2 antibody



Catalog Number: 142893

Product name

Anti-BIN2 antibody

Immunogen

[Human BIN2 / BRAP-1 \(His Tag\) recombinant protein](#)

Specificity

Human BIN2 / BRAP-1

Antibody description

Rabbit Polyclonal to Human BIN2

Preparation

Produced in rabbits immunized with purified, recombinant Human BIN2 / BRAP-1. BIN2 / BRAP-1 specific IgG was purified by Human BIN2 / BRAP-1 affinity chromatography.

Formulation

0.2 µm filtered solution in PBS

Storage

This antibody can be stored at 2°C-8°C for one month without detectable loss of activity. Antibody products are stable for twelve months from date of receipt when stored at -20°C to -80°C.

Preservative-Free.

Sodium azide is recommended to avoid contamination (final concentration 0.05%-0.1%). It is toxic to cells and should be disposed of

properly. Avoid repeated freeze-thaw cycles.

Clonality

Polyclonal

Ig Type

Rabbit IgG

Applications

WB, ELISA

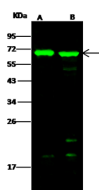
Dilutions

WB: 5-20 µg/ml

ELISA: 0.1-0.2 µg/ml

This antibody can be used at 0.1-0.2 µg/ml with the appropriate secondary reagents to detect Human BIN2 / BRAP-1.

Validations



Lanes	A	B
Items		
Sample (whole cell lysate)	A549	HepG2
Sample Volume (µg/lane)	30	30
Gel	13% SDS-PAGE reducing gel	
Recommended Concentration	5-20 µg/ml	
Secondary Antibody	Dylight 800-labeled Antibody to Rabbit IgG (H+L) at 1:5000 dilution.	
Explanation	Developed using Odyssey Imaging system. Predicted band size : 62 kDa Observed band size : 69 kDa Additional bands at : 19 kDa, 22 kDa and 55 kDa (We are unsure as to the identity of these extra bands.)	

BIN2 / BRAP-1 Antibody, Rabbit PAb, Antigen Affinity Purified, Western blot