

# RABEP2 antibody

Catalog Number: 107493

## Product name

RABEP2 antibody

## Specificity

Human; other species not tested.

## Antibody description

RABEP2 Mouse Monoclonal antibody. Positive WB detected in PC-3 cells. Positive IHC detected in human prostate cancer tissue, human breast cancer tissue. Observed molecular weight by Western-blot: 62kd

## Preparation

This antibody was obtained by immunization of RABEP2 recombinant protein (Accession Number: BC058900). Purification method: Caprylic Acid/Ammonium Sulfate Precipitation.

## Formulation

PBS with 0.1% sodium azide and 50% glycerol pH 7.3.

## Storage

Store at -20°C. DO NOT ALIQUOT

## Clonality

Monoclonal

## Ig Type

Mouse IgG1

## Applications

ELISA, WB, IHC

## Dilutions

Recommended Dilution:

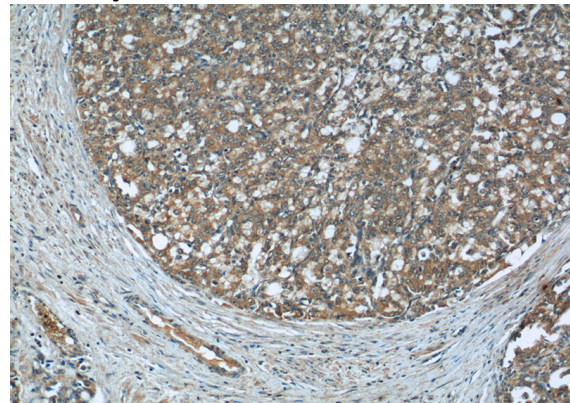
WB: 1:200-1:1000

IHC: 1:20-1:200

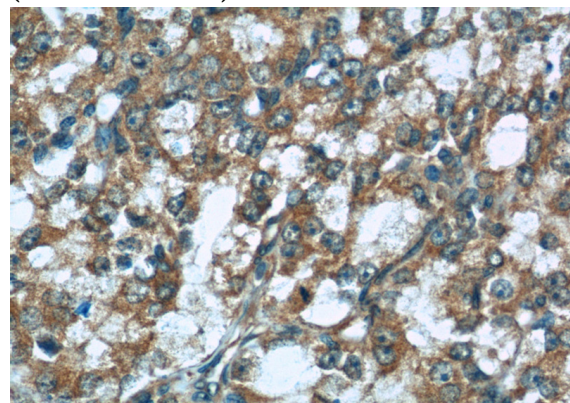
## Validations



PC-3 cells were subjected to SDS PAGE followed by western blot with Catalog No:107493(RABEP2 antibody) at dilution of 1:300



Immunohistochemistry of paraffin-embedded human prostate cancer tissue slide using Catalog No:107493(RABEP2 Antibody) at dilution of 1:50 (under 10x lens)



Immunohistochemistry of paraffin-embedded human prostate cancer tissue slide using Catalog

# RABEP2 antibody



Catalog Number: 107493

---

No:107493(RABEP2 Antibody) at dilution of 1:50 (under 40x lens)