

Anti-RPA32/RPA2 Rabbit antibody



Catalog Number: 167493

Product name

Anti-RPA32/RPA2 Rabbit antibody

Specificity

Human, Rat

Antibody description

RPA32/RPA2 Rabbit polyclonal antibody

Preparation

Antigen: A synthetic peptide of human RPA32/RPA2

Formulation

Supplied in 50nM Tris-Glycine(pH 7.4), 0.15M NaCl, 40%Glycerol, 0.01% sodium azide and 0.05% BSA.

Storage

Store at -20°C. Stable for 12 months from date of receipt.

Clonality

Polyclonal

Ig Type

Rabbit IgG

Applications

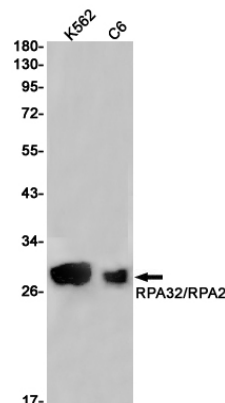
WB, IHC-P

Dilutions

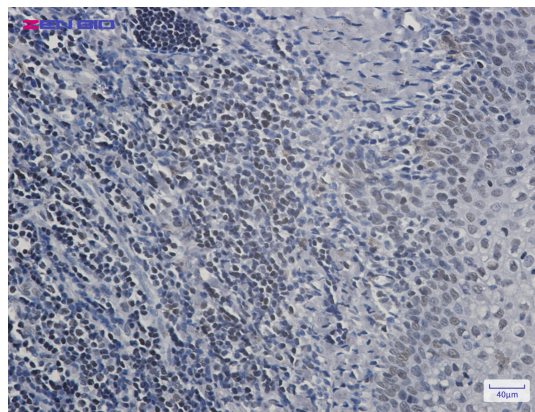
WB: 1/1000-1/5000

IHC: 1/50-1/500

Validations



Western blot detection of RPA32/RPA2 in K562, C6 cell lysates using RPA32/RPA2 Rabbit pAb(1:1000 diluted). Predicted band size: 29kDa. Observed band size: 29kDa.



Immunohistochemistry of RPA32/RPA2 in paraffin-embedded Human tonsil using RPA32/RPA2 Rabbit pAb at dilution 1/50