

SOD2 antibody

Catalog Number: 115493

Product name

SOD2 antibody

Specificity

Human, Mouse, Rat; other species not tested.

Antibody description

SOD2 Rabbit Polyclonal antibody. Positive IF detected in HUVEC cells. Positive IHC detected in human breast cancer tissue, human brain tissue, human small intestine tissue. Positive WB detected in HeLa cells, DU 145 cells, MCF7 cells, mouse brain tissue, rat brain tissue. Positive IP detected in mouse brain tissue. Observed molecular weight by Western-blot: 25 kDa

Preparation

This antibody was obtained by immunization of SOD2 recombinant protein (Accession Number: NM_001322816). Purification method: Antigen Affinity purified.

Formulation

PBS with 0.02% sodium azide and 50% glycerol pH 7.3.

Storage

Store at -20°C. DO NOT ALIQUOT

Clonality

Polyclonal

Ig Type

Rabbit IgG

Applications

ELISA, WB, IF, IHC, IP

Dilutions

Recommended Dilution:

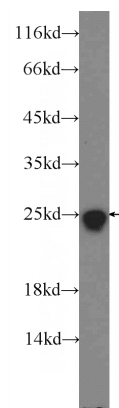
WB: 1:500-1:5000

IP: 1:500-1:5000

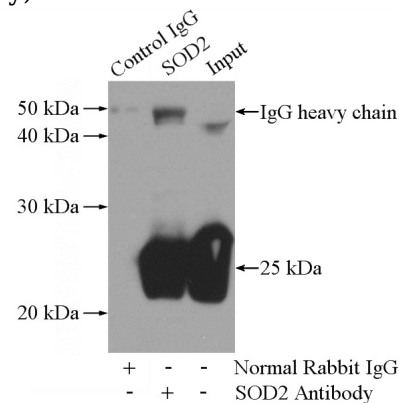
IHC: 1:20-1:200

IF: 1:20-1:200

Validations



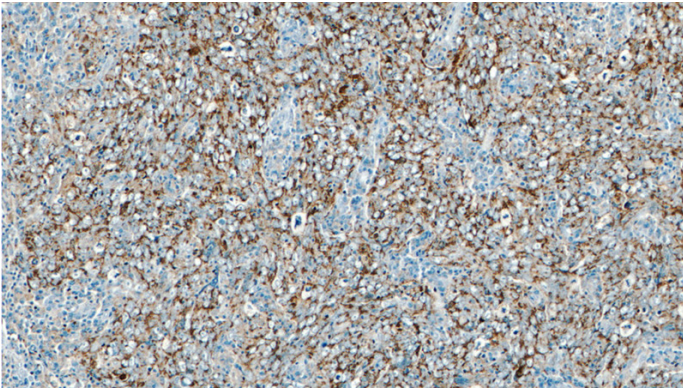
HeLa cells were subjected to SDS PAGE followed by western blot with Catalog No:115493(SOD2 antibody) at dilution of 1:1000



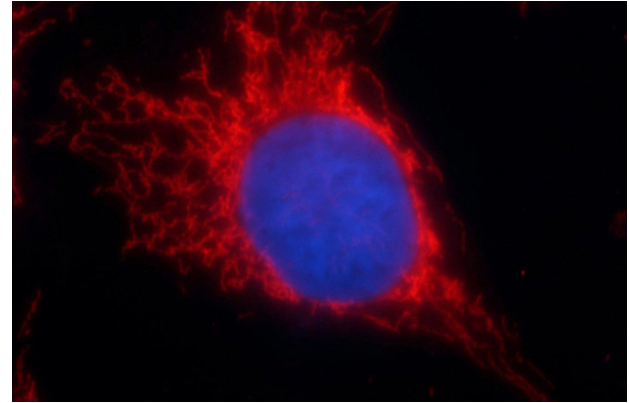
IP Result of anti-SOD2 (IP:Catalog No:115493, 4ug; Detection:Catalog No:115493 1:1000) with mouse brain tissue lysate 4000ug.

SOD2 antibody

Catalog Number: 115493



Immunohistochemistry of paraffin-embedded human breast cancer tissue slide using Catalog No:115493(SOD2 Antibody) at dilution of 1:50 (under 40x lens)



Immunofluorescent analysis of HUVEC cells using Catalog No:115493(SOD2 Antibody) at dilution of 1:50 and Rhodamine-Goat anti-Rabbit IgG

Immunohistochemistry of paraffin-embedded human breast cancer tissue slide using Catalog No:115493(SOD2 Antibody) at dilution of 1:50 (under 10x lens)

