

# Anti-C1 inhibitor/SerpinG1 antibody



Catalog Number: 102493

## Product name

Anti-C1 inhibitor/SerpinG1 antibody

## Immunogen

[Human C1 inhibitor/SerpinG1 \(His Tag\) recombinant protein](#)

## Specificity

Human SerpinG1 / C1IN

**No cross-reactivity** in ELISA with Human SerpinA1 / A1AT; Human SerpinA3 / SERPINA3 / AACT; Human SerpinA5 / PROCI; Human SerpinC1 /SERPINC1/ Antithrombin-III; Human SerpinD1 / SERPIND1 / HC2; Human SerpinF1 / SERPINF1 / PEDF; Human SerpinF2 / SERPINF2; Human SerpinI1 / SERPINI1 / Protease inhibitor 12

## Antibody description

Rabbit monoclonal to C1 inhibitor/SerpinG1

## Preparation

This antibody was obtained from a rabbit immunized with purified, recombinant Human SerpinG1 (rh SerpinG1; NP\_000053.2; Met 1-Ala 500).

## Formulation

0.2 µm filtered solution in PBS with 5% trehalose

## Storage

This antibody can be stored at 2°C-8°C for one month without detectable loss of activity. Antibody products are stable for twelve months from date of receipt when stored at -20°C to -80°C.

Preservative-Free.

Sodium azide is recommended to avoid contamination (final concentration 0.05%-0.1%). It is toxic to cells and should be disposed of properly. Avoid repeated freeze-thaw cycles.

## Clonality

Monoclonal

## Ig Type

Rabbit IgG

## Applications

ELISA, WB, IP

## Dilutions

WB: 5-10 µg/mL

ELISA: 0.1-0.2 µg/mL

This antibody can be used at 0.1-0.2 µg/mL with the appropriate secondary reagents to detect Human SERPING1. The detection limit for Human SERPING1 is approximately 0.00245 ng/well.

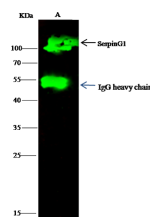
IP: 0.5-2 µg/mg of lysate

## Validations



Items	Lanes	A
Sample (whole cell lysate)		HepG2
Sample Volume (µg/lane)		30
Gel		13% SDS-PAGE reducing gel
Recommended Concentration		5-10 µg/ml
Secondary Antibody		Dylight 800 labeled Antibody To Rabbit IgG (H+L), at 1:5000 dilution.

## SerpinG1 / C1 inhibitor / C1IN Antibody, Rabbit



Items	Lanes	A
Sample (whole cell lysate)		HepG2
Sample quantity		0.5 mg
IP antibody quantity		2 µg
Protein G agarose		15 µl of 50% Protein G Agarose
Gel		13% SDS-PAGE reducing gel
Primary antibody		SerpinG1 antibody at 10 µg/ml
Secondary antibody		Dylight 800-labeled antibody to rabbit IgG (H+L), at 1:5000 dilution.

MAb, Western blot

# Anti-C1 inhibitor/SerpinG1 antibody



Catalog Number: 102493

---

SerpinG1 / C1 inhibitor / C1IN Antibody, Rabbit      MAb