

CDC16/APC6 antibody



Catalog Number: 109093

Product name

CDC16/APC6 antibody

IHC: 1:20-1:200

IF: 1:20-1:200

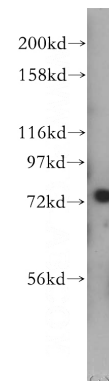
Specificity

Human, Mouse, Rat; other species not tested.

Validations

Antibody description

CDC16/APC6 Rabbit Polyclonal antibody. Positive IF detected in Hela cells. Positive IHC detected in human cervical cancer tissue. Positive WB detected in Jurkat cells, HeLa cells, K-562 cells. Observed molecular weight by Western-blot: 72kd



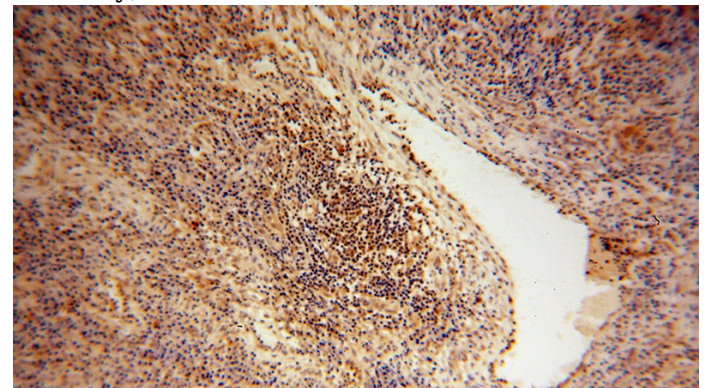
Preparation

This antibody was obtained by immunization of CDC16/APC6 recombinant protein (Accession Number: XM_047430754). Purification method: Antigen affinity purified.

Jurkat cells were subjected to SDS PAGE followed by western blot with Catalog No:109093(CDC16 antibody) at dilution of 1:500

Formulation

PBS with 0.02% sodium azide and 50% glycerol pH 7.3.



Storage

Store at -20°C. DO NOT ALIQUOT

Clonality

Polyclonal

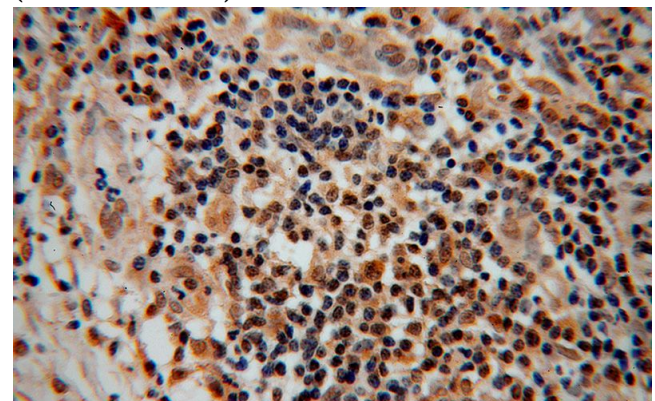
Immunohistochemical of paraffin-embedded human cervical cancer using Catalog No:109093(CDC16 antibody) at dilution of 1:50 (under 10x lens)

Ig Type

Rabbit IgG

Applications

ELISA, WB, IHC, IF



Dilutions

Recommended Dilution:

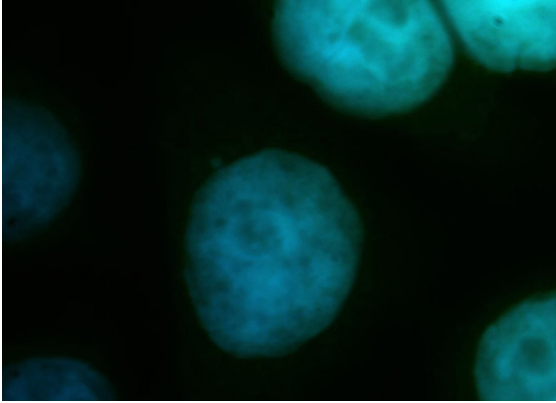
WB: 1:200-1:2000

Immunohistochemical of paraffin-embedded

CDC16/APC6 antibody

Catalog Number: 109093

human cervical cancer using Catalog No:109093(CDC16 antibody) at dilution of 1:50 (under 40x lens)



Immunofluorescent analysis of HeLa cells, using CDC16 antibody Catalog No:109093 at 1:50 dilution and FITC-labeled donkey anti-rabbit IgG (green). Blue pseudocolor = DAPI (fluorescent DNA dye).