

Anti-beta Tubulin Mouse antibody



Catalog Number: 169093

Product name

Mouse IgG1

Anti-beta Tubulin Mouse antibody

Applications

Specificity

WB, ICC/IF

Human, Mouse, Monkey, Rat

Dilutions

Antibody description

WB: 1/5000

beta Tubulin Mouse monoclonal antibody

;ICC: 1/500

Preparation

;IF: 1/100

Antigen: Purified recombinant human Tubulin beta protein fragments expressed in E.coli.

Validations

Formulation

PBS(pH 7.4) containing with 0.03% Proclin300 and 50% glycerol.

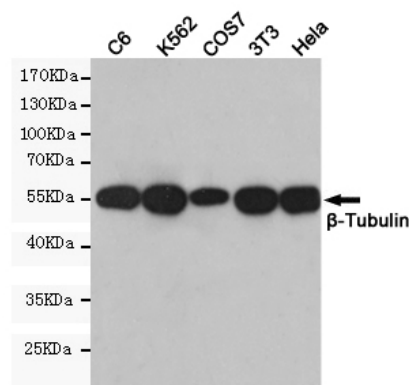
Storage

Store at 4°C short term. Store at -20°C long term. Avoid freeze / thaw cycle.

Clonality

Monoclonal

Ig Type



Western blot detection of Tubulin beta in C6,K562,COS7,3T3 and HeLa cell lysates and using Tubulin beta mouse mAb (1:5000 diluted).Predicted band size: 55KDa.Observed band size: 55KDa.