

Annexin A2 antibody



Catalog Number: 108093

Product name

Annexin A2 antibody

Recommended Dilution:

WB: 1:1000-1:10000

Specificity

Human, Mouse, Rat; other species not tested.

IP: 1:200-1:2000

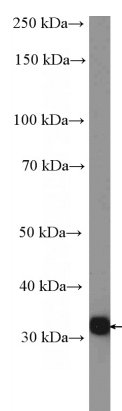
IHC: 1:50-1:500

Antibody description

Annexin A2 Rabbit Polyclonal antibody. Positive IHC detected in human liver tissue, human colon cancer tissue, human oesophagus cancer tissue. Positive IF detected in HeLa cells, NIH/3T3 cells. Positive IP detected in HeLa cells. Positive WB detected in HeLa cells, K-562 cells, mouse placenta tissue, NIH/3T3 cells, rat uterus tissue. Observed molecular weight by Western-blot: 39 kDa

IF: 1:50-1:500

Validations



Preparation

This antibody was obtained by immunization of Annexin A2 recombinant protein (Accession Number: XM_017022090). Purification method: Antigen affinity purified.

HeLa cells were subjected to SDS PAGE followed by western blot with Catalog No:108093(Annexin A2 Antibody) at dilution of 1:2000

Formulation

PBS with 0.1% sodium azide and 50% glycerol pH 7.3.

Storage

Store at -20°C. DO NOT ALIQUOT

Clonality

Polyclonal

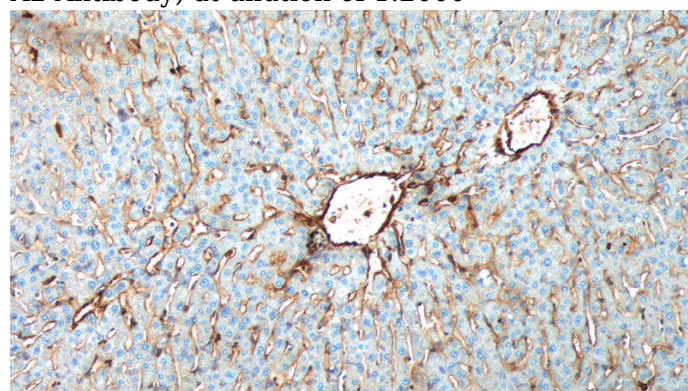
Ig Type

Rabbit IgG

Applications

ELISA, IP, WB, IF, IHC

Dilutions

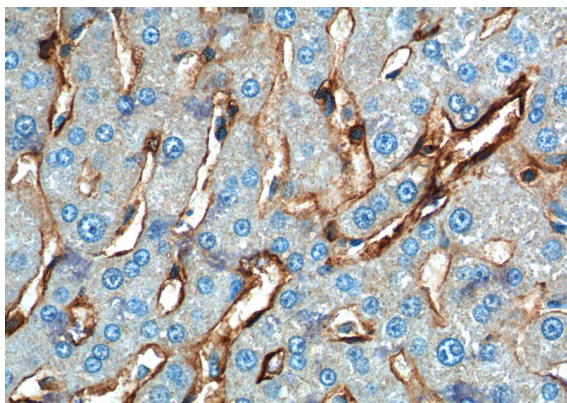


Immunohistochemistry of paraffin-embedded human liver tissue slide using Catalog No:108093(Annexin A2 Antibody) at dilution of 1:200 (under 10x lens).

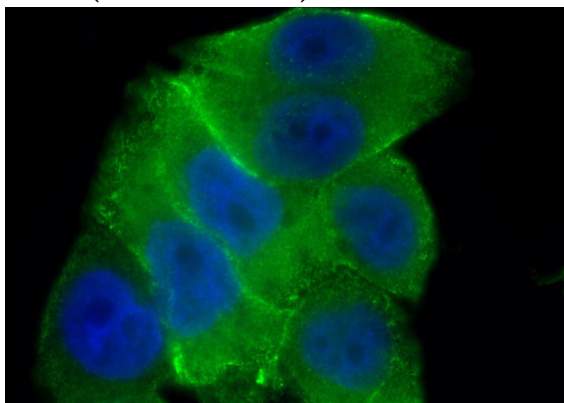
Annexin A2 antibody



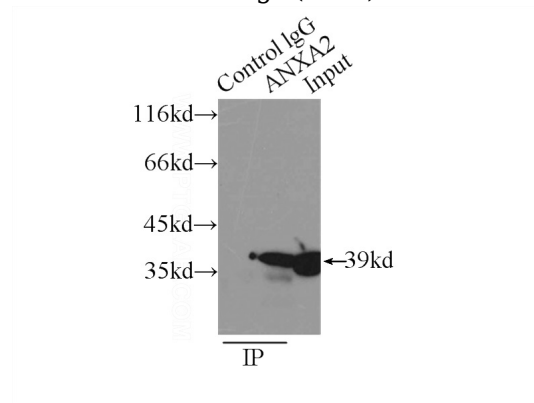
Catalog Number: 108093



Immunohistochemistry of paraffin-embedded human liver tissue slide using Catalog No:108093(Annexin A2 Antibody) at dilution of 1:200 (under 40x lens).



Immunofluorescent analysis of (-20oc Ethanol) fixed HeLa cells using Catalog No:108093(Annexin A2 Antibody) at dilution of 1:100 and Alexa Fluor 488-conjugated AffiniPure Goat Anti-Rabbit IgG(H+L)



IP Result of anti-ANXA2 (IP:Catalog No:108093, 3ug; Detection:Catalog No:108093 1:500) with HeLa cells lysate 3000ug.