

# Anti-LEF1 Rabbit antibody



Catalog Number: 168783

## Product name

Anti-LEF1 Rabbit antibody

## Specificity

Human

## Antibody description

LEF1 Rabbit monoclonal antibody

## Preparation

Antigen: A synthetic peptide of human LEF1

## Formulation

50nM Tris-Glycine(pH 7.4), 0.15M NaCl, 40%Glycerol, 0.01% sodium azide and 0.05% BSA.

## Storage

Store at 4°C short term. Store at -20°C long term. Avoid freeze / thaw cycle.

## Clonality

Monoclonal

## Ig Type

Rabbit IgG

## Applications

WB, IHC-P, ICC/IF, FC

## Dilutions

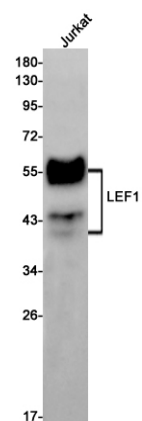
WB: 1/1000

IHC: 1/20

ICC/IF: 1/20-1/50

FC: 1/20

## Validations



Western blot detection of LEF1 in Jurkat cell lysates using LEF1 Rabbit mAb(1:1000 diluted).Predicted band size:44kDa.Observed band size:25-58kDa.