

Anti-Cyclin B2/CCNB2 Rabbit antibody



Catalog Number: 167783

Product name

Anti-Cyclin B2/CCNB2 Rabbit antibody

Specificity

Human, Mouse, Rat

Antibody description

Cyclin B2/CCNB2 Rabbit monoclonal antibody

Preparation

Antigen: Recombinant protein of human Cyclin B2/CCNB2

Formulation

50nM Tris-Glycine(pH 7.4), 0.15M NaCl, 40%Glycerol, 0.01% sodium azide and 0.05% BSA

Storage

Store at 4°C short term. Store at -20°C long term. Avoid freeze / thaw cycle.

Clonality

Monoclonal

Ig Type

Rabbit IgG

Applications

WB, IHC-P, ICC/IF, IP

Dilutions

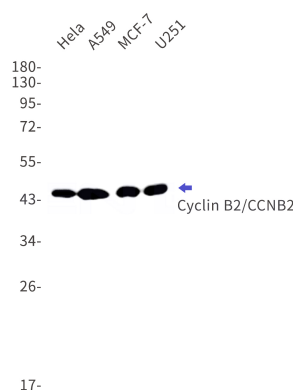
WB: 1/1000

IHC: 1/20

ICC/IF: 1/100

IP: 1/20

Validations



Western blot detection of Cyclin B2/CCNB2 in HeLa, A549, MCF-7, U251 cell lysates using Cyclin B2/CCNB2 Rabbit mAb (1:1000 diluted). Predicted band size: 45 kDa. Observed band size: 45 kDa.