

Anti-Alpha-synuclein Rabbit antibody



Catalog Number: 166783

Product name

Anti-Alpha-synuclein Rabbit antibody

Specificity

Human, Mouse, Rat

Antibody description

Alpha-synuclein Rabbit polyclonal antibody

Preparation

Antigen: Recombinant protein of human Alpha-synuclein

Formulation

Supplied in 50nM Tris-Glycine(pH 7.4), 0.15M Nacl, 40%Glycerol, 0.01% sodium azide and 0.05% BSA.

Storage

Store at -20°C. Stable for 12 months from date of receipt.

Clonality

Polyclonal

Ig Type

Rabbit IgG

Applications

WB, IHC-P, IP

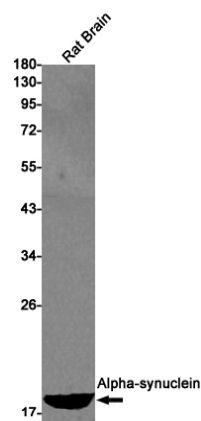
Dilutions

WB: 1/5000

IHC: 1/20-1/500

IP: 1/20

Validations



Western blot detection of Alpha-synuclein in Rat Brain lysates using Alpha-synuclein Rabbit pAb(1:1000 diluted). Predicted band size:15kDa.Observed band size:18kDa.