

Anti-LOC9270361 antibody



Catalog Number: 175783

Product name

Anti-LOC9270361 antibody

Specificity

Rice

Antibody description

Rabbit polyclonal antibody to LOC9270361

Preparation

This antigen of this antibody was synthetic peptide within japonica rice aa 580-640.

Formulation

Liquid, 1*TBS (pH7.4), 0.2% BSA, 50% Glycerol.
Preservative: 0.05% Sodium Azide.

Storage

Store at +4°C after thawing. Aliquot store at -20°C. Avoid repeated freeze / thaw cycles.

Clonality

Polyclonal

Ig Type

Rabbit IgG

Applications

WB, ELISA

Dilutions

WB: 1:500-1:1,000

ELISA: 1:5,000

Validations

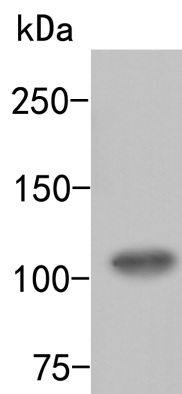


Fig1.; Western blot analysis of ARF16 on rice tissue lysate. Proteins were transferred to a PVDF membrane and blocked with 5% BSA in PBS for 1 hour at room temperature. The primary antibody (1/500) was used in 5% BSA at room temperature for 2 hours. Goat Anti-Rabbit IgG - HRP Secondary Antibody (HA1001) at 1:5,000 dilution was used for 1 hour at room temperature.