

# ROM1 antibody



Catalog Number: 114783

## Product name

ROM1 antibody

## Specificity

Human, Mouse; other species not tested.

## Antibody description

ROM1 Rabbit Polyclonal antibody. Positive IF detected in HeLa cells. Positive WB detected in mouse eye tissue, HeLa cells. Observed molecular weight by Western-blot: 37-45kd

## Preparation

This antibody was obtained by immunization of ROM1 recombinant protein (Accession Number: NM\_000327). Purification method: Antigen affinity purified.

## Formulation

PBS with 0.02% sodium azide and 50% glycerol pH 7.3.

## Storage

Store at -20°C. DO NOT ALIQUOT

## Clonality

Polyclonal

## Ig Type

Rabbit IgG

## Applications

ELISA, WB, IF

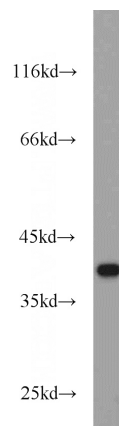
## Dilutions

Recommended Dilution:

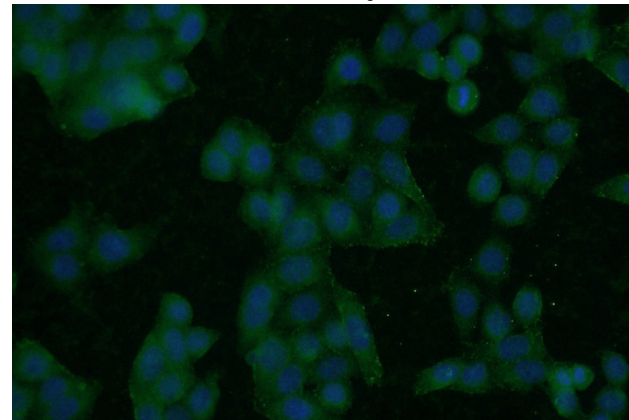
WB: 1:200-1:2000

IF: 1:20-1:200

## Validations



mouse eye tissue were subjected to SDS PAGE followed by western blot with Catalog No:114783(ROM1 antibody) at dilution of 1:400



Immunofluorescent analysis of HeLa cells using Catalog No:114783(ROM1 Antibody) at dilution of 1:50 and Alexa Fluor 488-conjugated AffiniPure Goat Anti-Rabbit IgG(H+L)