

PGD antibody

Catalog Number: 113783

Product name

PGD antibody

WB: 1:500-1:5000

IP: 1:200-1:2000

Specificity

Human, Mouse, Rat; other species not tested.

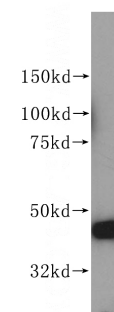
IHC: 1:20-1:200

IF: 1:10-1:100

Antibody description

PGD Rabbit Polyclonal antibody. Positive IP detected in HepG2 cells. Positive WB detected in HepG2 cells, HeLa cells, Jurkat cells. Positive IF detected in HepG2 cells. Positive IHC detected in human lymphoma tissue, human liver cancer tissue. Observed molecular weight by Western-blot: 53 kDa, 45 kDa

Validations



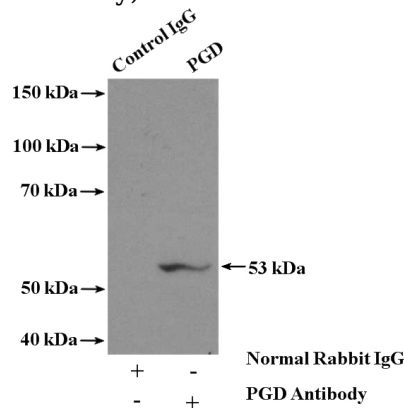
Preparation

This antibody was obtained by immunization of PGD recombinant protein (Accession Number: NM_002631). Purification method: Antigen affinity purified.

HepG2 cells were subjected to SDS PAGE followed by western blot with Catalog No:113783(PGD antibody) at dilution of 1:500

Formulation

PBS with 0.02% sodium azide and 50% glycerol pH 7.3.



Storage

Store at -20°C. DO NOT ALIQUOT

Clonality

Polyclonal

Ig Type

Rabbit IgG

Applications

ELISA, WB, IHC, IF, IP

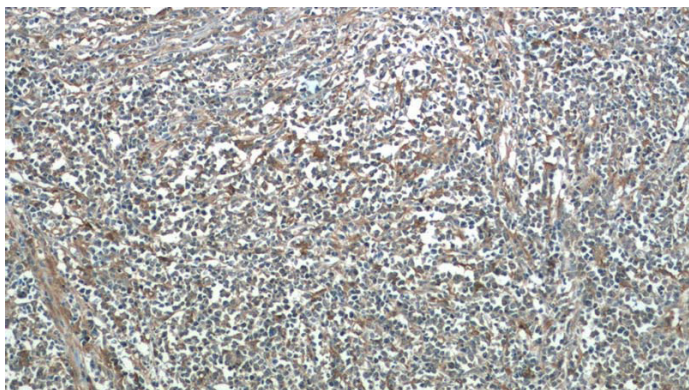
Dilutions

Recommended Dilution:

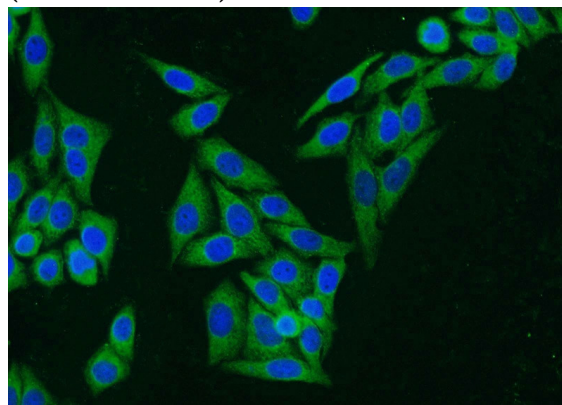
IP Result of anti-PGD (IP:Catalog No:113783, 4ug; Detection:Catalog No:113783 1:500) with HepG2 cells lysate 3200ug.

PGD antibody

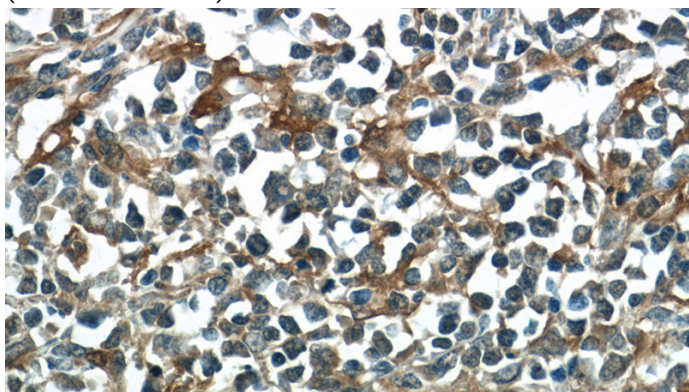
Catalog Number: 113783



Immunohistochemistry of paraffin-embedded human lymphoma tissue slide using Catalog No:113783(PGD Antibody) at dilution of 1:50 (under 40x lens)



Immunofluorescent analysis of HepG2 cells using Catalog No:113783(PGD Antibody) at dilution of 1:25 and Alexa Fluor 488-conjugated AffiniPure Goat Anti-Rabbit IgG(H+L)



Immunohistochemistry of paraffin-embedded human lymphoma tissue slide using Catalog No:113783(PGD Antibody) at dilution of 1:50 (under 10x lens)