

# SMC6 antibody

Catalog Number: 115383

## Product name

SMC6 antibody

IP: 1:500-1:5000

IF: 1:50-1:500

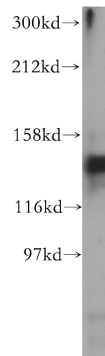
## Specificity

Human, Mouse, Rat; other species not tested.

## Validations

## Antibody description

SMC6 Rabbit Polyclonal antibody. Positive IP detected in mouse testis tissue. Positive WB detected in mouse testis tissue, HEK-293 cells. Positive IF detected in HEK-293 cells. Observed molecular weight by Western-blot: 130 kDa



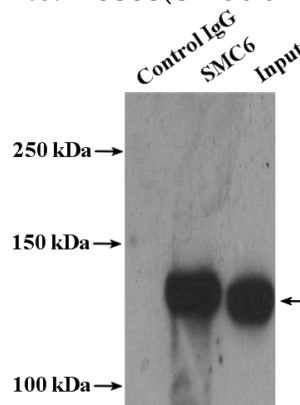
## Preparation

This antibody was obtained by immunization of SMC6 recombinant protein (Accession Number: XM\_017004915). Purification method: Antigen affinity purified.

mouse testis tissue were subjected to SDS PAGE followed by western blot with Catalog No:115383(SMC6 antibody) at dilution of 1:500

## Formulation

PBS with 0.02% sodium azide and 50% glycerol pH 7.3.



## Storage

Store at -20°C. DO NOT ALIQUOT

IP Result of anti-SMC6 (IP:Catalog No:115383, 4ug; Detection:Catalog No:115383 1:1000) with mouse testis tissue lysate 4000ug.

## Clonality

Polyclonal

## Ig Type

Rabbit IgG

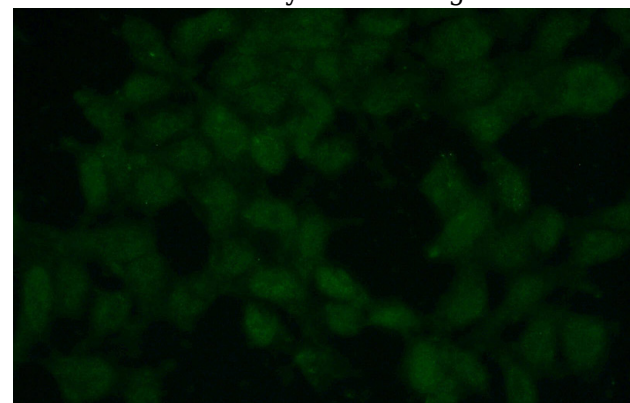
## Applications

ELISA, WB, IP, IF

## Dilutions

Recommended Dilution:

WB: 1:500-1:5000



Immunofluorescent analysis of (10% Formaldehyde) fixed HEK-293 cells using Catalog

# SMC6 antibody



Catalog Number: 115383

---

No:115383(SMC6 Antibody) at dilution of 1:50

and Alexa Fluor 488-conjugated AffiniPure Goat  
Anti-Rabbit IgG(H+L)