

PSMB3 antibody



Catalog Number: 114383

Product name

PSMB3 antibody

WB: 1:200-1:2000

IHC: 1:20-1:200

Specificity

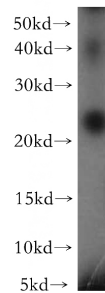
Human, Mouse, Rat; other species not tested.

IF: 1:20-1:200

Validations

Antibody description

PSMB3 Rabbit Polyclonal antibody. Positive IHC detected in human liver tissue, human brain tissue, human ovary tissue, human placenta tissue, human skin tissue, human testis tissue. Positive IF detected in HepG2 cells. Positive WB detected in HeLa cells, MCF7 cells. Observed molecular weight by Western-blot: 23kd



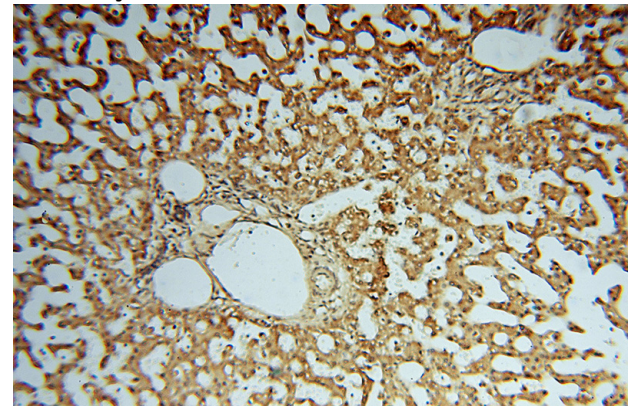
Preparation

This antibody was obtained by immunization of PSMB3 recombinant protein (Accession Number: NM_002795). Purification method: Antigen affinity purified.

HeLa cells were subjected to SDS PAGE followed by western blot with Catalog No:114383(PSMB3 antibody) at dilution of 1:200

Formulation

PBS with 0.02% sodium azide and 50% glycerol pH 7.3.



Storage

Store at -20°C. DO NOT ALIQUOT

Clonality

Polyclonal

Immunohistochemical of paraffin-embedded human liver using Catalog No:114383(PSMB3 antibody) at dilution of 1:50 (under 10x lens)

Ig Type

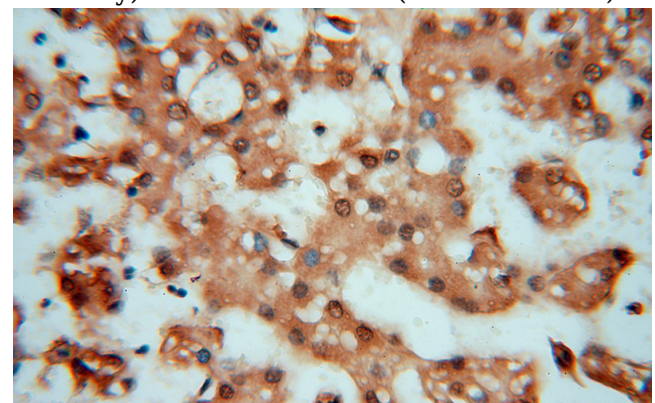
Rabbit IgG

Applications

ELISA, WB, IHC, IF

Dilutions

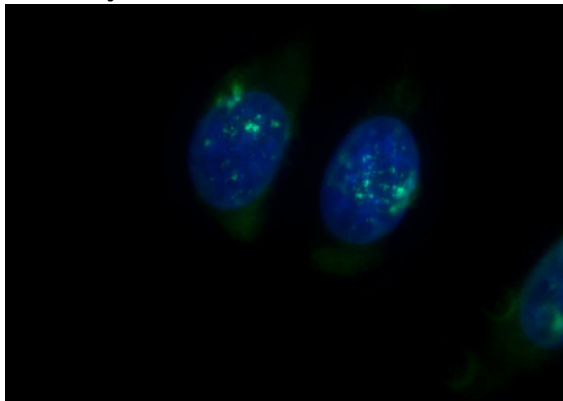
Recommended Dilution:



PSMB3 antibody

Catalog Number: 114383

Immunohistochemical of paraffin-embedded human liver using Catalog No:114383(PSMB3 antibody) at dilution of 1:50 (under 40x lens)



Immunofluorescent analysis of HepG2 cells using Catalog No:114383(PSMB3 Antibody) at dilution of 1:50 and Alexa Fluor 488-conjugated AffiniPure Goat Anti-Rabbit IgG(H+L)