

# CYP1A1 antibody



Catalog Number: 109683

## Product name

CYP1A1 antibody

Recommended Dilution:

WB: 1:500-1:5000

## Specificity

Human, Mouse; other species not tested.

IP: 1:500-1:5000

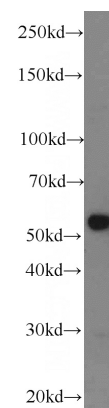
IHC: 1:20-1:200

## Antibody description

CYP1A1 Rabbit Polyclonal antibody. Positive WB detected in mouse cerebellum tissue, K-562 cells, mouse lung tissue. Positive IP detected in mouse lung tissue. Positive FC detected in Jurkat cells. Positive IHC detected in human breast cancer tissue. Positive IF detected in HeLa cells. Observed molecular weight by Western-blot: 50-58 kDa

IF: 1:10-1:100

## Validations



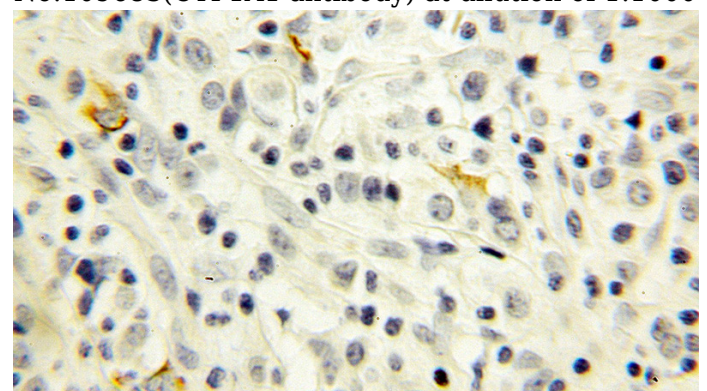
## Preparation

This antibody was obtained by immunization of CYP1A1 recombinant protein (Accession Number: NM\_000499). Purification method: Antigen affinity purified.

mouse cerebellum tissue were subjected to SDS PAGE followed by western blot with Catalog No:109683(CYP1A1 antibody) at dilution of 1:1000

## Formulation

PBS with 0.02% sodium azide and 50% glycerol pH 7.3.



Immunohistochemical of paraffin-embedded human breast cancer using Catalog No:109683(CYP1A1 antibody) at dilution of 1:100

## Storage

Store at -20°C. DO NOT ALIQUOT

## Clonality

Polyclonal

## Ig Type

Rabbit IgG

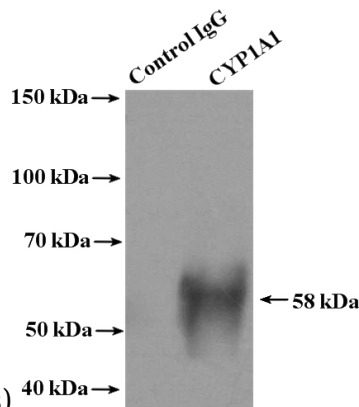
## Applications

ELISA, WB, IHC, FC, IF, IP

## Dilutions

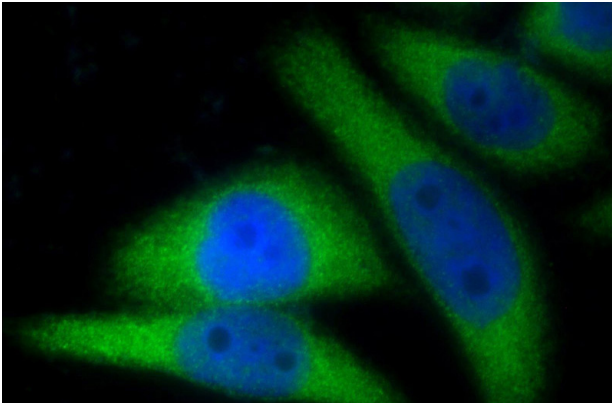
# CYP1A1 antibody

Catalog Number: 109683

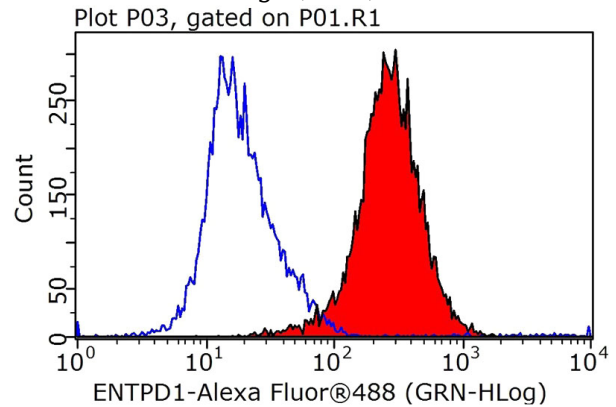


(under 10x lens)

IP Result of anti-CYP1A1 (IP:Catalog No:109683, 4ug; Detection:Catalog No:109683 1:1000) with mouse lung tissue lysate 3600ug.



Immunofluorescent analysis of HeLa cells using Catalog No:109683(CYP1A1 Antibody) at dilution of 1:25 and Alexa Fluor 488-conjugated AffiniPure Goat Anti-Rabbit IgG(H+L)



$1 \times 10^6$  Jurkat cells were stained with 0.5ug CYP1A1 antibody (Catalog No:109683, red) and control antibody (blue). Fixed with 90% MeOH blocked with 3% BSA (30 min). Alexa Fluor 488-conjugated AffiniPure Goat Anti-Rabbit IgG(H+L) with dilution 1:1000.