

Anti-DUSP5 antibody

Catalog Number: 176683

Product name

Anti-DUSP5 antibody

Specificity

Human, Mouse

Antibody description

Rabbit polyclonal antibody to DUSP5

Preparation

This antigen of this antibody was synthetic peptide within human dusp5 aa 82-125.

Formulation

Liquid, 1*PBS (pH7.4), 0.2% BSA, 40% Glycerol.
Preservative: 0.05% Sodium Azide.

Storage

Store at +4°C after thawing. Aliquot store at -20°C or -80°C. Avoid repeated freeze / thaw cycles.

Clonality

Polyclonal

Ig Type

Rabbit IgG

Applications

WB, ICC

Dilutions

WB: 1:500

ICC: 1:50

Validations

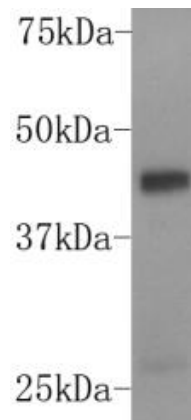


Fig1: Western blot analysis on K562 cell lysates using anti-DUSP5 rabbit polyclonal antibody.

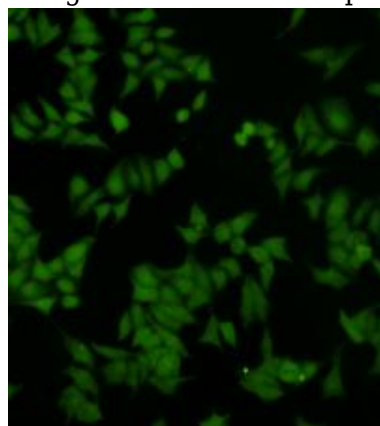


Fig2: ICC image of DUSP5 antibody stained HeLa cells. The secondary antibody (green) was goat anti-rabbit IgG (H+L) FITC conjugated.