

Anti-CD9 Rabbit antibody



Catalog Number: 166683

Product name

Anti-CD9 Rabbit antibody

Specificity

Human, Mouse, Rat

Antibody description

CD9 Rabbit polyclonal antibody

Preparation

Antigen: A synthesized peptide derived from human CD9

Formulation

Rabbit IgG in phosphate buffered saline , pH 7.4, 150mM NaCl, 0.02% sodium azide and 50% glycerol.

Storage

Store at 4°C short term. Store at -20°C long term. Avoid freeze / thaw cycle.

Clonality

Polyclonal

Ig Type

Rabbit IgG

Applications

WB, IHC-P, ICC/IF, IP, FC

Dilutions

WB: 1/500-1/2000

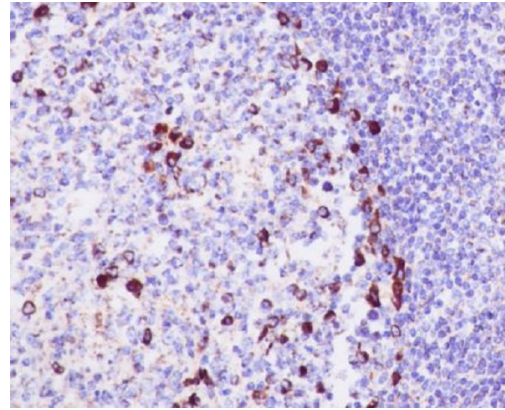
IHC: 1/50-1/200

ICC/IF: 1/50-1/200

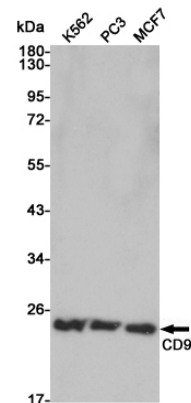
IP: 1/50

FC: 1/50

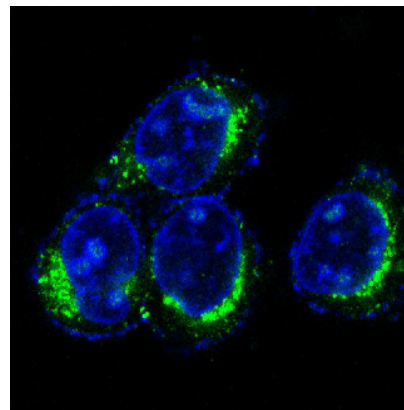
Validations



Immunohistochemical analysis of paraffin-embedded human tonsil, using CD9 Antibody.



Western blot analysis of CD9 expression in K562, PC3 and MCF7 cell lysates using CD9 antibody at 1/1000 dilution. Predicted band size: 25 kDa. Observed band size: 25 kDa.



Immunofluorescent analysis of HeLa cells, using CD9 Antibody .