

Anti-REG1B antibody



Catalog Number: 102683

Product name

Anti-REG1B antibody

Immunogen

[Human REG1B \(His Tag\) recombinant protein](#)

Specificity

Human REG1B / PSPS2

Antibody description

Rabbit polyclonal to REG1B

Preparation

Produced in rabbits immunized with purified, recombinant Human REG1B (rh REG1B; NP_006498.1; Met 1-Asn 166). REG1B specific IgG was purified by human REG1B affinity chromatography

Formulation

0.2 µm filtered solution in PBS with 5% trehalose

Storage

This antibody can be stored at 2°C-8°C for one month without detectable loss of activity. Antibody products are stable for twelve months from date of receipt when stored at -20°C to -80°C.

Preservative-Free.

Sodium azide is recommended to avoid contamination (final concentration 0.05%-0.1%). It is toxic to cells and should be disposed of properly. Avoid repeated freeze-thaw cycles.

Clonality

Polyclonal

Ig Type

Rabbit IgG

Applications

ELISA, IHC-P

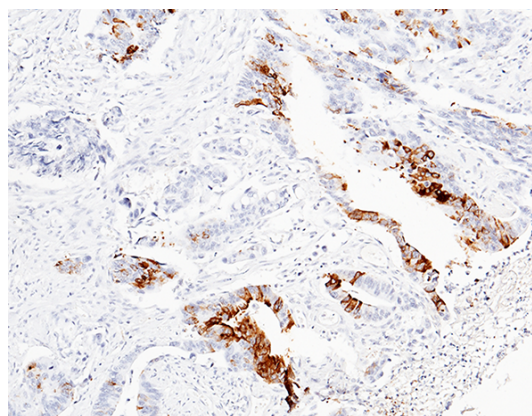
Dilutions

ELISA: 0.1-0.2 µg/mL

This antibody can be used at 0.1-0.2 µg/mL with the appropriate secondary reagents to detect Human REG1B. The detection limit for Human REG1B is approximately 0.00245 ng/well.

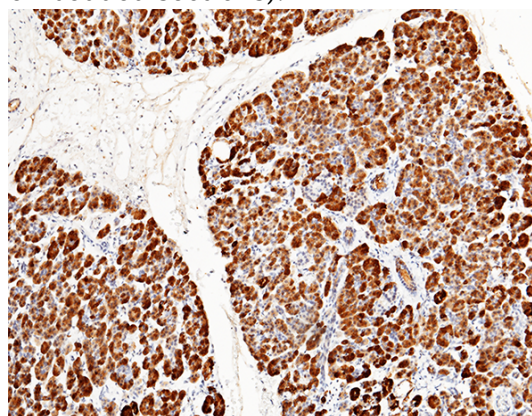
IHC-P: 0.1-2 µg/mL

Validations



REG1B / PSPS2 Antibody, Rabbit PAb, Antigen Affinity Purified, Immunohistochemistry

Immunochemical staining of human REG1B in human colon carcinoma with rabbit polyclonal antibody (1 µg/mL, formalin-fixed paraffin embedded sections).



REG1B / PSPS2 Antibody, Rabbit PAb, Antigen Affinity Purified, Immunohistochemistry

Anti-REG1B antibody



Catalog Number: 102683

Immunochemical staining of human REG1B in human pancreas with rabbit polyclonal antibody (1 $\mu\text{g}/\text{mL}$, formalin-fixed paraffin embedded sections).