

IGFBP1 antibody



Catalog Number: 111683

Product name

IGFBP1 antibody

Specificity

Human; other species not tested.

Antibody description

IGFBP1 Rabbit Polyclonal antibody. Positive IHC detected in human placenta tissue, human stomach tissue. Positive WB detected in human placenta tissue. Observed molecular weight by Western-blot: 35 kDa

Preparation

This antibody was obtained by immunization of IGFBP1 recombinant protein (Accession Number: NM_000596). Purification method: Antigen affinity purified.

Formulation

PBS with 0.02% sodium azide and 50% glycerol pH 7.3.

Storage

Store at -20°C. DO NOT ALIQUOT

Clonality

Polyclonal

Ig Type

Rabbit IgG

Applications

ELISA, WB, IHC

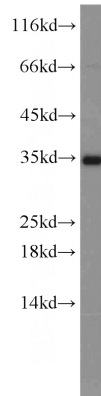
Dilutions

Recommended Dilution:

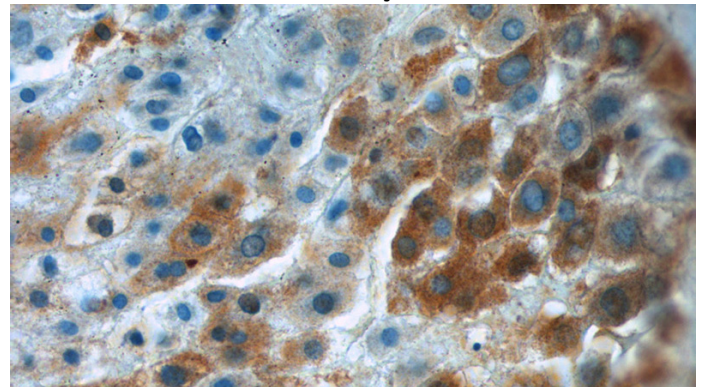
WB: 1:200-1:1000

IHC: 1:20-1:200

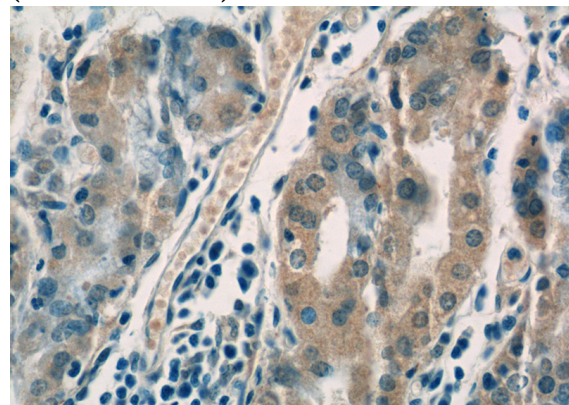
Validations



human placenta tissue were subjected to SDS PAGE followed by western blot with Catalog No:111683(IGFBP1 antibody) at dilution of 1:300



Immunohistochemistry of paraffin-embedded human placenta tissue slide using Catalog No:111683(IGFBP1 Antibody) at dilution of 1:50 (under 40x lens)



Immunohistochemistry of paraffin-embedded human stomach tissue slide using Catalog No:111683(IGFBP1 Antibody) at dilution of 1:50

IGFBP1 antibody



Catalog Number: 111683

(under 40x lens)