

# LMO4 Polyclonal Antibody



Catalog Number: 165283

## Product name

LMO4 Polyclonal Antibody

## Specificity

Human, Mouse, Rat

## Antibody description

Polyclonal antibody to LMO4

## Preparation

Antigen: Recombinant fusion protein containing a sequence corresponding to amino acids 1-165 of human LMO4 (NP\_006760.1).

## Formulation

PBS with 0.02% sodium azide, 50% glycerol, pH7.3.

## Storage

Store at -20°C. Avoid freeze / thaw cycles.

## Clonality

Polyclonal

## Ig Type

Rabbit IgG

## Applications

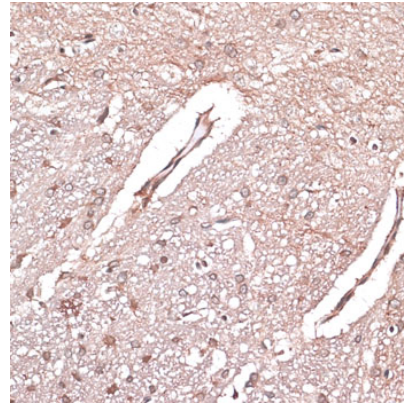
IHC, IF

## Dilutions

IHC 1:50 - 1:200

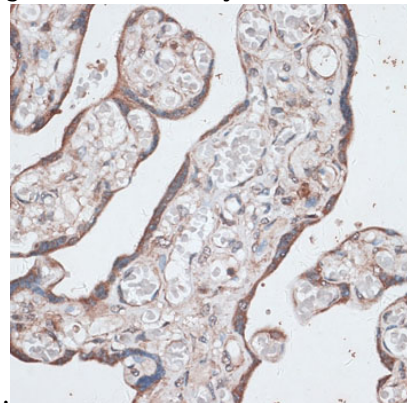
IF 1:50 - 1:100

## Validations



Immunohistochemistry - LMO4 Polyclonal Antibody

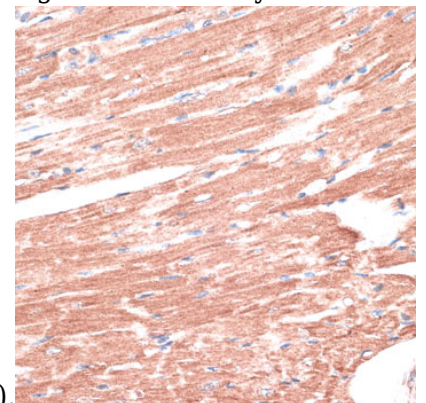
Immunohistochemistry of paraffin-embedded rat brain using LMO4 antibody at dilution of 1:100



(40x lens).

Immunohistochemistry - LMO4 Polyclonal Antibody

Immunohistochemistry of paraffin-embedded human placenta using LMO4 antibody at dilution



of 1:100 (40x lens).

Immunohistochemistry - LMO4 Polyclonal Antibody

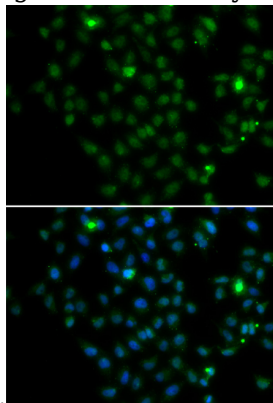
# LMO4 Polyclonal Antibody



Catalog Number: 165283

---

Immunohistochemistry of paraffin-embedded mouse heart using LMO4 antibody at dilution of



1:100 (40x lens).

Immunofluorescence - LMO4 Polyclonal Antibody

Immunofluorescence analysis of MCF-7 cells using LMO4 antibody . Blue: DAPI for nuclear staining.