

# Human UBCH8 / UBE2L6 (His Tag) recombinant protein



Catalog Number: 502283

## General Information

### Gene Name Synonym

Retinoic acid-induced gene B protein; UbcH8; Ubiquitin carrier protein L6; Ubiquitin-protein ligase L6

### Protein Construction

A DNA sequence encoding the human UBE2L6 isoform 1 (O14933-1) (Met 1-Ser 153) was expressed, with a polyhistidine tag at the N-terminus.

### Organism

Human

### Expression Host

E. coli

## QC Testing

### Purity

> 96 % as determined by SDS-PAGE

### Endotoxin

Please contact us for more information.

### Stability

Samples are stable for up to twelve months from date of receipt at -70°C

### Predicted N terminal

Met

### Molecular Mass

The recombinant human UBE2L6 consisting of 168 amino acids and has a calculated molecular mass of 19.6KDa. It migrates as an 18 kDa band in SDS-PAGE under reducing conditions as predicted.

### Formulation

Lyophilized from sterile 20mM Tris, 0.1% Brij35, pH 8.5

1. 5 % trehalose and mannitol are added as protectants before lyophilization.
2. Please contact us for any concerns or special requirements.

## Usage Guide

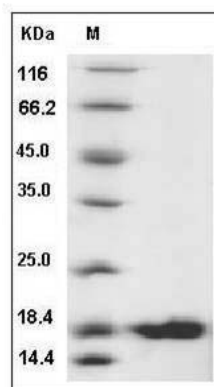
### Storage

Store it under sterile conditions at -20°C to -80°C. It is recommended that the protein be aliquoted for optimal storage. Avoid repeated freeze-thaw cycles.

### Reconstitution

Adding sterile water, prepare a stock solution of 0.25 mg/ml. Concentration is measured by UV-Vis.

### SDS-PAGE



Human UBCH8 / UBE2L6 Protein (His Tag) SDS-PAGE