

# Anti-CEBPG / CEBP gamma antibody



Catalog Number: 100283

## Product name

Anti-CEBPG / CEBP gamma antibody

## Immunogen

[Human CEBPG / CEBP gamma \(His Tag\) recombinant protein](#)

## Specificity

Human CEBPG / CEBP gamma

## Antibody description

Rabbit polyclonal to CEBPG / CEBP gamma

## Preparation

Produced in rabbits immunized with purified, recombinant Human CEBPG / CEBP gamma (rh CEBPG / CEBP gamma; P53567; Pro39-Asn147). CEBPG / CEBP gamma specific IgG was purified by Human CEBPG / CEBP gamma affinity chromatography.

## Formulation

0.2 µm filtered solution in PBS

## Storage

This antibody can be stored at 2°C-8°C for one month without detectable loss of activity. Antibody products are stable for twelve months from date of receipt when stored at -20°C to -80°C.

Preservative-Free.

Sodium azide is recommended to avoid contamination (final concentration 0.05%-0.1%). It is toxic to cells and should be disposed of properly. Avoid repeated freeze-thaw cycles.

## Clonality

Polyclonal

## Ig Type

Rabbit IgG

## Applications

ELISA, WB, IP

## Dilutions

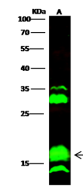
WB: 2-10 µg/ml

ELISA: 0.1-0.2 µg/ml

This antibody can be used at 0.1-0.2 µg/ml with the appropriate secondary reagents to detect Human CEBPG / CEBP gamma. The detection limit for Human CEBPG / CEBP gamma is < 0.039 ng/well.

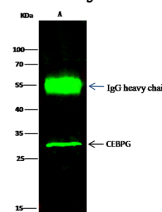
IP: 1-4 µg/mg of lysate

## Validations



Items	Lanes	A
Sample (whole cell lysate)		Raw264.7
Sample Volume (µg/lane)		30
Gel		13% SDS-PAGE reducing gel
Recommended Concentration		2-10 µg/ml
Secondary Antibody		Dylight 800-labeled Antibody to Rabbit IgG (H+L), at 1:5000 dilution.
Explanation		Developed using Odyssey imaging system. Predicted band size: 16 kDa Observed band size: 16 kDa Additional bands at: 35 kDa, 28 kDa and 13 kDa (We are unsure as to the identity of these extra bands. They are possible non-specific bindings).

CEBPG / CEBP gamma Antibody, Rabbit PAb, Antigen Affinity Purified, Western blot



Items	Lanes	A
Sample (whole cell lysate)		Raw264.7
Sample quantity		0.5 mg
IP antibody quantity		2 µg
Protein G agarose		15 µl of 50% Protein G Agarose
Gel		13% SDS-PAGE reducing gel
Primary antibody		HS-CEBPG antibody at 5 µg/ml [Cat# 14925-RP02]
Secondary antibody		Dylight 800-labeled antibody to rabbit IgG (H+L), at 1:5000 dilution

CEBPG / CEBP gamma Antibody, Rabbit PAb, Antigen Affinity Purified, Immunoprecipitation