

ZNRF3 Polyclonal Antibody



Catalog Number: 162983

Product name

ZNRF3 Polyclonal Antibody

Specificity

Human, Mouse, Rat

Antibody description

Polyclonal antibody to ZNRF3

Preparation

Antigen: A synthetic peptide corresponding to a sequence within amino acids 1-100 of human ZNRF3 (NP_115549.2).

Formulation

PBS with 0.02% sodium azide, 50% glycerol, pH7.3.

Storage

Store at -20°C. Avoid freeze / thaw cycles.

Clonality

Polyclonal

Ig Type

Rabbit IgG

Applications

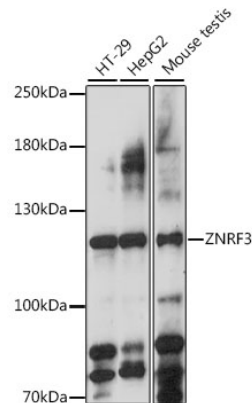
WB, IHC

Dilutions

WB 1:500 - 1:2000

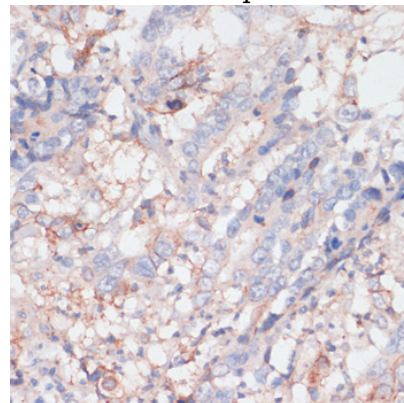
IHC 1:50 - 1:200

Validations



Western blot - ZNRF3 Polyclonal Antibody

Western blot analysis of extracts of various cell lines, using ZNRF3 antibody at 1:1000 dilution. Secondary antibody: HRP Goat Anti-Rabbit IgG (H+L) at 1:10000 dilution. Lysates/proteins: 25ug per lane. Blocking buffer: 3% nonfat dry milk in TBST. Detection: ECL Enhanced Kit. Exposure time: 90s.



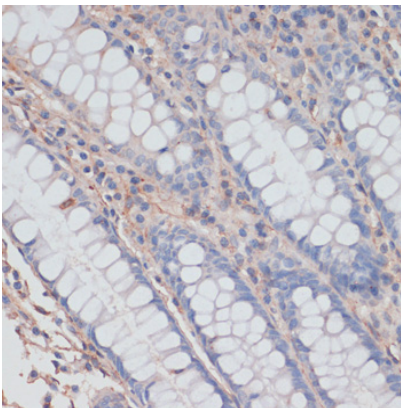
Immunohistochemistry - ZNRF3 Polyclonal Antibody

Immunohistochemistry of paraffin-embedded human colon carcinoma using ZNRF3 antibody at dilution of 1:100 (40x lens).

ZNRF3 Polyclonal Antibody

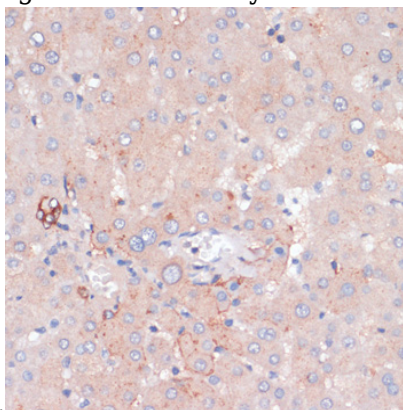


Catalog Number: 162983



Immunohistochemistry - ZNRF3 Polyclonal Antibody

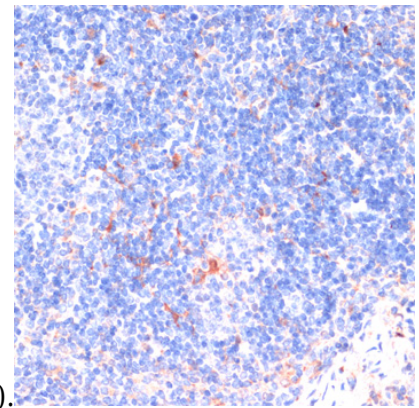
Immunohistochemistry of paraffin-embedded human colon using ZNRF3 antibody at dilution of



1:100 (40x lens).

Immunohistochemistry - ZNRF3 Polyclonal Antibody

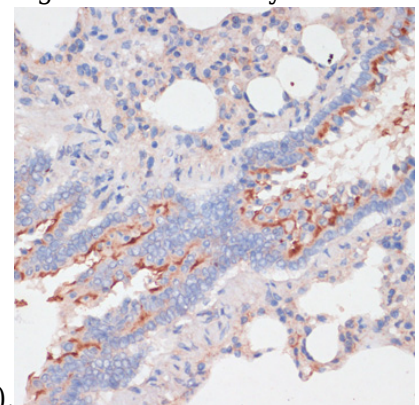
Immunohistochemistry of paraffin-embedded human liver using ZNRF3 antibody at dilution of



1:100 (40x lens).

Immunohistochemistry - ZNRF3 Polyclonal Antibody

Immunohistochemistry of paraffin-embedded mouse spleen using ZNRF3 antibody at dilution of



1:100 (40x lens).

Immunohistochemistry - ZNRF3 Polyclonal Antibody

Immunohistochemistry of paraffin-embedded rat lung using ZNRF3 antibody at dilution of 1:100 (40x lens).